

Spirit of **GIVING**

Superheroes
Complete the Mission!

Inspiration from *Philippians 4:13*

Also in this issue:

Using Our Superpowers for Good

Confessions of a Super Fan

The Violet Door Project

The Rebirth of Labor & Delivery



Feature stories

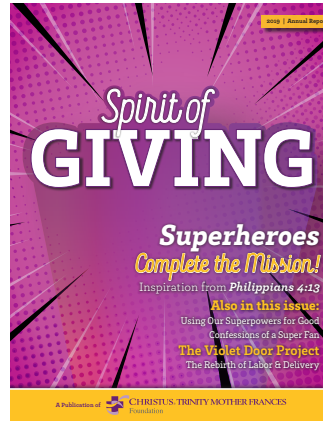
7 Miracle Child

9 A TOAST to EAST TEXAS

20 Chairman's Challenge Be Heroic!

Contributions

- 6 Miracles Begin With You!
- 10 Miracle Run
- 14 Grateful Hearts
- 15 1937 Founders Fellowship
- 17 It's Hip to be Square
- 19 Annual Report - Super Friends Unite
- 22 Friends of the Foundation Gift Report



On the cover

3 Superheroes Complete the Mission

2019-2020 Board of Directors CHRISTUS Trinity Mother Frances Foundation

John P. Williams, Chair
Dennis Box
Thomas J. Brown
James A. Caccitolo, MD
Randall V. Childress
John Gaston
Terry Giles
Chris Glenney

Marilyn Hardy
Steve Hellmuth
Steve Keuer, MD*
Michael Mahfood
Sister Malgorzata Majszczyk
Brian McCabe
Andy Navarro*
Laura Redman

Linda Rowe
John Soules, Jr.
Scott Smith, MD*
Jerry Spencer
Bishop Joseph E. Strickland
Patrick R. Thomas, MD **
Frank Ward, MD
Clayton Whitney, MD

The Incredibles (aka CHRISTUS Trinity Mother Frances Foundation Team)

Scott Fossey
Vice President Philanthropy, CHRISTUS Health - Northeast Texas, South Texas, Louisiana

Robin Rowan
Executive Director, CHRISTUS Trinity Mother Frances Foundation
Director, Children's Miracle Network Hospitals

Daniel Carrell
Senior Development Officer

Sherri Durham
Financial Assistant

Eddie Gobert
Executive Assistant

Nela Long
Manager, Annual Giving and Grants

Christina Mosier
Program Manager, Children's Miracle Network Hospitals

Felicia Myrick
Constituent Strategist

Kristi Payne
Regional Financial Assistant

Suzie Rippy
Program Manager, Events and Communications

Joan Rogers
Regional Financial Assistant

Patrick R. Thomas, MD
Senior Development Officer

*Ex-Officio
**Emeritus

Spirit of GIVING

Welcome to Spirit of Giving, a publication for friends of CHRISTUS Trinity Mother Frances Foundation, a not-for-profit Texas organization. This magazine spotlights the generosity and involvement of the CHRISTUS Trinity Mother Frances' family of benefactors and the impact of their philanthropy on the institution. In showcasing these individuals and the phenomenal programs at CHRISTUS Trinity Mother Frances Health System, we illustrate the power of philanthropy and its crucial role in building a healthier society.

Correspondence and inquiries should be addressed to: Editor, Spirit of Giving CHRISTUS Trinity Mother Frances Foundation 100 E. Ferguson, Suite 800

Publisher
Robin Rowan

Managing Editor
Suzie Rippy

Contributors
Sherri Durham

Designer
Trevor Adams

Photographers
Noah Morris
John Murphy

If you do not wish to be contacted as part of our fundraising efforts, please notify the CHRISTUS Trinity Mother Frances Foundation in writing at 100 E. Ferguson, Suite 800, Tyler, Texas 75702.

mission **ACCOMPLISHED!**

What a marvelous year it has been for the Foundation! Every day we have been blessed to feel firsthand the collective passion of our donors, partners, board members and Associates. In this annual report, we look back on a year full of heroic deeds and selfless acts. We hope you are inspired by the rich stories featured – the advancements that would not have been made without your help – to accomplish our mission of extending the healing ministry of Jesus Christ.

As you read through the pages of Spirit of Giving 2019:

- Take note of the stories of our Superheroes
- Gain courage from Miracle Child Blake Barney and her family.
- Be moved by the creativity of our featured local Artists.
- Be motivated by the SFA and UT Tyler college students who host Dance Marathons and “dance for the kids who can’t.”
- Be enthused by the Children’s Miracle Network volunteers, who connect with like-hearted people to work for the communities in which they live and work and worship.
- Be excited about the advanced technology that you have helped bring to the galaxy we call Northeast Texas.
- Pore through the Super Friends of the Foundation and find yourself listed as one of our heroes!

Our 2019 CHRISTUS Trinity Mother Frances Foundation **Incredibles** have accomplished a very important mission that has changed the universe, and heroically improved the health care of Northeast Texans.

USING **our** SUPER

What makes someone a Superhero?

- ☀ Superheroes are powerful and use their powers for good.
- ☀ They have principles and share a strong set of beliefs.
- ☀ They express enjoyment in their purpose or calling.
- ☀ They dramatically inspire change in others.

At CHRISTUS Trinity Mother Frances Foundation, we meet superheroes every day. They aren't usually sporting a colorful costume (although it would be awesome if they did), yet they are superheroes just the same. Our superheroes come in the form of ordinary people whom God uses in extraordinary ways. They are donors of time, talent and treasure. They are grateful patients who give gifts because our caregiver helped them. They are businesses who share our mission to improve the community, who donate monetarily or through gifts In-Kind. They are long-time friends who support our health system through the donation of purposeful funds. They give gifts for specific programs and innovative equipment. They support our annual Foundation events. These superheroes are often standing right next to you. They prefer not to be

recognized or applauded. They see the important work CHRISTUS Trinity Mother Frances is doing locally for their coworkers, neighbors, friends and family, and they want to help us continue the good work being accomplished in Northeast Texas.

You are our Superheroes!

Do you remember how Gotham City asked for Batman's help? They used the so-called "Bat Signal" and projected a huge bat in the clouds above the city. In the past year, **you** answered the call we sent out for assistance in so many ways.

- ☀ You generously donated to the Neonatal Intensive Care Unit expansion.
- ☀ You came to our aid supporting Miracles Begin With You.
- ☀ You joined the fight by signing up for the 1937 Founders Fellowship!
- ☀ You gave a \$5 donation for a CMN Dairy Queen Miracle Treat.

Each gift is a special "super power" you shared, and we are grateful. You are among us, doing good work right here in our community because it matters, and it's what real heroes do. When you remove your "masks," we see the woman who gives to the

POWERS for GOOD!

ER Pediatric Waiting Room in honor of her grandchildren. We see the neighbor who volunteers on a Saturday for the CMN Miracle Run. We see the hero who always says, "what else can I do to make a difference?"

As a nonprofit organization, we cannot exist, cannot reach our dreams or come closer to fulfilling our mission without you. We need you to continue the fight, to keep using your powers for good while supporting our mission to extend the healing ministry of Jesus Christ. And at the end of each year, we will say,

"Once again, the day is saved... thanks to the generosity of our Superheroes."



Robin Rowan
Executive Director
CHRISTUS
Trinity Mother
Frances Foundation

HONORING THE JUSTICE LEAGUE

Superheroes don't always wear capes, but they do believe in miracles! On January 31, 2019, the 7th annual **Miracles Begin With You!** event not only raised support for Children's Miracle Network Hospitals, but also allowed the community to recognize and celebrate these CMNH superheroes. Although from different worlds and possessing a variety of powers, they unite their talents for good to help the children of Northeast Texas.



Dr. Ming Lu does not just create miracles; he literally helps others see the miracles all around them. Dr. Lu is one of only two thousand Retina Specialists in the country. His precision care that helped save

Child Micah Read's eyesight from a condition that could have led to blindness. We were honored to recognize Dr. Ming Lu and the incredible miracles he's made in our community.



Kornpop's love for kids has led him to clown on six continents, but he prefers clowning for local children with special needs or those going through a difficult time. David McCullough began his

clowning career at the age of twelve and his incredible balloon art creations have been seen at hundreds of CMNH events over the years. Always the life of the party, you won't find a kinder, more generous person than Kornpop. We were honored to celebrate the laughter and miracles Kornpop continues to bring to our children!



During the evening, **Felicia Myrick** was also honored with the Mildred C. Crawford Heart For Children Award, recognizing her loyal volunteerism and her outstanding commitment to CMNH.

Thanks to generous supporters, over \$100,000 was raised, funds that will provide vital pediatric services for children served by CHRISTUS Trinity Mother Frances Health System.

*Please visit christustmf.org/cmnh to learn more about Children's Miracle Network or make a gift.



a **BIG** Miracle in a **Small** Package

2019 MIRACLE CHILD - *BLAKE BARNEY*

Sometimes the biggest Miracles come in small packages. This is certainly true for 2019 Miracle Child, Blake Barney. Everything about Blake's Mom, Siobhan's pregnancy was normal. When Blake didn't cry at birth, her doctors were immediately concerned. At seven weeks old, she developed a high fever and was admitted to the hospital multiple times for kidney infections. When her parents started noticing developmental delays, Blake underwent genetic testing and in May of 2018, received the diagnosis of EBF3-HADDS.

EBF3-HADDS is a very rare and newly diagnosed syndrome discovered in 2016. There are only about two hundred known cases in the world. Symptoms include low muscle tone, delayed development, lack of smile, urological abnormalities and speech delay. However, Blake continues to impress her family and caregivers with her strong will. Blake will stop at nothing to get where she wants, either on all fours or cruising in her gait trainer. She even impressed her doctors by taking her first unassisted steps this year!

Blake attends specialized appointments coordinated by the Special Needs Clinic, a service for medically fragile children made possible by Children's Miracle Network Hospitals. Taking care of Blake is a 24/7 job, so when Siobhan needs a brief time to break away to refresh, she knows Blake will be given excellent care by the specially trained staff at the CHRISTUS Trinity Mother Frances Respite Care Program, a multifaceted program for families of children with special needs, made possible by CMNH.

Blake loves music, playing with her big sister Logan, and balloons! Since studies have only begun on the long term effects of EBF3-HADDS, Blake's family is taking life one day at a time and enjoying every little moment with their big Miracle, Blake!

*You can help children like Blake Barney by supporting Children's Miracle Network Hospitals. One hundred percent of the funds raised locally stay at CHRISTUS Trinity Mother Frances Health System to provide life-saving pediatric equipment and medical services to children in our area.

Confessions of a Super Fan



Scott Fossey
Vice President of
Philanthropy
Northeast Texas,
Southeast Texas
and Louisiana

"The one who blesses others is abundantly blessed; those who help others are helped."

Proverbs 11:25

I'll admit it. I'm an action movie fan in a big way. I recently took my two sons to see *Avengers: Endgame*, one of this summer's Marvel blockbuster movies (our third since May). *An epic quest with bedazzling action, where friends heroically use their talents to fight overwhelming odds for a common purpose, restoring balance to the universe.* The plot of this latest Marvel action movie? No, it's actually my slightly exaggerated commentary on the 2018-2019 Foundation year! CHRISTUS Trinity Mother Frances has benefitted from so many super heroes this year... all of you using your gifts and talents to make an incredible difference – and literally changing the world of health care as we know it.

All of those who supported CHRISTUS Trinity Mother Frances this year were using their gifts and talents for good. Even though you may not think you have one, we've all been endowed with a special gift. God has blessed all Christians with spiritual gifts to have a profound impact on the world. Maybe you were the volunteer who decorated a special tree for the Festival of Trees auction benefiting CMNH. Or the host who helped give a party for A Toast to East Texas. Or you used your leadership skills on the Foundation Board finance committee. Perhaps you gave a lead gift towards a Foundation project in memory of a loved one. In all instances, you were blessing others through your gifts, your wisdom and your service, and through these acts you gave glory to God. Author Leo Buscaglia said, "Your talent is God's gift to you. What you do with it is your gift back to God."

I applaud the themes prevalent in the superhero movies I've seen – themes like sacrifice, service, teamwork and "with great power comes great responsibility." Every day I see these themes played out through you, our very generous allies. You are our partners, using your superpowers for good, who share our mission of extending the healing ministry of Jesus Christ to all in need. This is good news for humanity, or rather the communities served by CHRISTUS Trinity Mother Frances Health System.

A TOAST to East Texas ²⁰¹⁹

We are grateful for our A Toast to East Texas Super Friends!

Cheers to the CHRISTUS Trinity Mother Frances Foundation Women's Board, for the outstanding success of their fourth annual event, A Toast to East Texas! The Lord has truly blessed us with a community full of generous hearts!

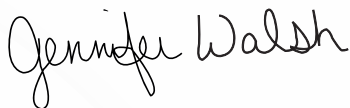
From April 9 through May 16, the eight parties of A Toast to East Texas 2019 celebrated the creativity of our many party host groups in fabulous homes and venues all over East Texas. A few of this year's choices included a Night at the Movies, A Glamorous Evening with The Great Gatsby where patrons were decked out in their 20's attire, and a wonderful Luncheon with the Ladies where guests had the honor to get to know our fabulous Sisters of the Holy Family of Nazareth at an exclusive luncheon. When all parties were completed, and sponsorships collected, the event had raised over \$300,000! Every dollar will benefit the Women's Board designated project, the Neonatal Intensive Care Unit at CHRISTUS Mother Frances Hospital - Tyler, which will greatly improve the lives of our tiniest patients.

A note of thanks from our incredible 2019 Chair Jennifer Walsh:

I am thrilled and inspired by the generosity bestowed on this project by Super Friends from our Northeast Texas community. A toast to our awesome party Hosts, without whom this success would not have been achieved. We are so very thankful to you for opening your homes and your hearts and making T2ET a huge success for the fourth year. A toast to our generous sponsors! You made our dream of an expanded space for our tiniest patients a reality. A toast to all who participated in the wonderful 2019 events! You sponsored, you brought friends, you encouraged others to participate and supported us through this annual endeavor. The parties were a blast because you showed up and made them so. We cannot fully express how much we appreciate you all.

Our 2020 Co-chairs Heather Bates and Carmen Carpenter are already hard at work on Toast 2020. They cannot wait to visit with you about our next worthy project on behalf of Women and Children. We are so excited about the possibilities!

Gratefully,



Jennifer Walsh
2019 Chair, A Toast to East Texas





WE RUN FOR **MIRACLE RUN** THEIR LIVES

6th Annual Tyler Rose City Miracle Run

Whether participants ran, walked, or strolled, they all shared one common goal: to raise funds for sick and injured children in our community. Runners and walkers of all ages signed up to participate in either the chip-timed 5k or the Family Fun Run, which took place along beautiful Rose Rudman Trail in Tyler. There were smiles for miles as participants crossed the finish line knowing that they were helping to bring health, healing and hope to local children.

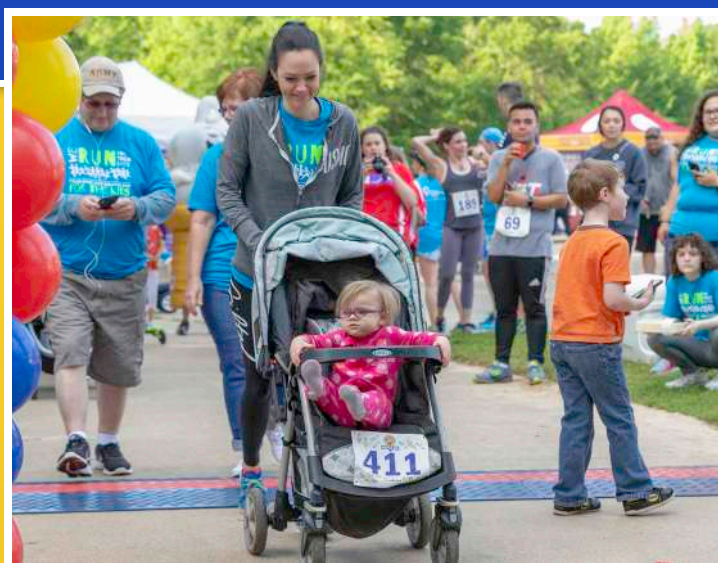
The programs of Children's Miracle Network Hospitals support vital pediatric services provided by CHRISTUS Trinity Mother Frances Health System. In addition to funding the purchase of specialized equipment, CMNH funds pediatric programs and education to equip caregivers with the knowledge and resources needed to deliver the best possible care for the children in our community.

Thank you to our sponsors, many of whom had runners participate!

- 5 Star Nutrition
- Angels of Care Pediatric Home Health
- CHRISTUS Health
- Cooperative Teachers Credit Union
- Dakotas Chophouse
- Infinity Health Solutions
- J&K Storage
- Kelly Community Federal Credit Union
- OrangeTheory Fitness
- Thrive Skilled Pediatric Care
- United Credit Union
- United Heritage Credit Union
- Zeid Women's Health



Runners made a dash at the starting gate.



Miracle Child Blake Barney and mom lead the race!



IMAGES FROM AN AMAZING YEAR

Acts 19:11 "God performed extraordinary miracles at the hands of His disciples." What an incredible year it has been! Every day the members of the Foundation Team were blessed to feel firsthand the collective passion and spirit of giving of our donors, partners, board members, Associates and volunteers. They might not have been "leaping tall buildings," but they performed amazing feats of strength and caring.





Revealing Our Marvelous Mission

2019-2020

For over 80 years, CHRISTUS Mother Frances Hospital – Tyler has been known as “the baby hospital” of Northeast Texas. In 2018, there were 2,885 babies born in The Birth Center, and that number is predicted to increase to 3000 by the end of this year. While our high level of advanced care is undeniable, the aesthetics and equipment of the labor and delivery unit need major renovation and expansion. The most recent modernization of The Birth Center was in 1988!

Fulfilling a Critical Need

Every mother deserves the best possible care during the intimate moment of childbirth. “When our patients experience the outdated décor of the labor rooms, it’s hard for them to get past that and see the excellent care that we give,” said Suzanne Gailey, Clinical Director of The Birth Center. “We critically need to expand, and we want our labor and delivery unit to match the excellent care we give to our patients.”

As new equipment and treatments continue to develop, it remains crucial for CHRISTUS Mother Frances Hospital-Tyler to stay on top of the latest in health care. The new labor and delivery unit will fulfill an immense need, providing more space to mothers and staff while upgrading the facilities and equipment to the highest level. “We want our mothers to focus on what matters most - the health and wellbeing of their new child,” remarked Suzanne.

Superheroes Believe in the Power of Their Dreams

“The Wonder Women of the Women’s Board are behind this project 100 percent,” said 2020 Foundation Women’s Board Co-chairs Heather Bates and Carmen Carpenter. The CHRISTUS Trinity Mother Frances Women’s Board has adopted The Birth Center Expansion as their 2020 fundraising project. Named “**The Violet Door Project**,” the Women’s Board will designate all funds raised through A Toast to East Texas 2020 for this mission.



The Violet Door Project

Transforming the Birth Experience for Mothers in Northeast Texas

Dramatically inspiring change can be considered a superhuman feat. Be the first to donate to **The Violet Door Project** and encourage others to follow your lead. "Your support is essential to making this comprehensive expansion a reality," said Robin Rowan, Executive Director of the CHRISTUS Trinity Mother Frances Foundation.

With your financial support, The Birth Center Expansion in the Louise Herrington Ornelas Center for Mothers and Babies will include the following new and modernized spaces:

- Fourteen Private Delivery Rooms
- Five OB/ED Rooms
- Provider Work Station
- Two Central Nurse Work Stations
- Five Staff Work Stations
- Physician Lounge/Sleep Room
- Staff Lounge
- Reception Area
- Nourishment Area



BUILDING AN INCREDIBLE FUTURE



CHRISTUS Trinity Mother Frances Foundation is so blessed to have a dedicated group of people who are committed to making our community and our world a better place. We would like to shine the spotlight on a two of **THE INCREDIBLES** who have made this work possible in 2019.

100 million Americans suffer from chronic pain. One in ten Americans has experienced pain every day for three months or more. Chronic pain is the number one cause of long-term disability in the U.S. These statistics are frightening and true! But thanks to an incredible blessing this year from a very generous couple, Northeast Texans are finding relief from a world of pain. **Hazel and Bobby Tosh**, owners of Harry's Building Materials, Inc of Rusk, Jacksonville, Nacogdoches and Troup recently made a generous donation to support The Pain Center at CHRISTUS Mother Frances Hospital – *Jacksonville*.

The Pain Center is dedicated to improving the quality of patient's lives by using a multi-disciplinary approach to the treatment of chronic pain conditions. This project would not have been possible without the philanthropic support of friends like **Hazel and Bobby Tosh**.

An average interventional procedure day consists of 20-30 pain procedures, as well as up to six surgeries per week. That's a lot of patients! The new Hazel and Bobby Tosh Waiting Room will provide ample space for patients and their guests and includes amenities to aid in passing time while they wait. The renovation of The Pain Center is making an amazing difference in the lives of thousands of Northeast Texans, and we are so grateful to the Tosh family for their incredible gift.



We are excited to announce that the Founders Society is now the **1937 Founders Fellowship**. Although the name has changed, the purpose remains the same: to honor our noble, visionary founders as well as our generous annual supporters, and to celebrate the power of giving in the lives of Northeast Texans. These gifts have a profound impact, providing the funds to nurture growth, dreams and vision. The **1937 Founders Fellowship** is a group of donors who make annual gifts of \$1,000 or more in the calendar year to any area of the health care ministry. It's a privilege for us to celebrate and recognize these annual giving leaders who help build on the vital mission begun by our faithful founders, "to extend the healing ministry of Jesus Christ."



Legacy Gift planning plays an important part in the long-term success and growth of CHRISTUS Trinity Mother Frances Health System and helps ensure that our mission will continue to expand for generations to come.

You may become a member of **Legacy Leaders** by including CHRISTUS Trinity Mother Frances Foundation as beneficiary of your will, life insurance, bank/investment accounts or through a charitable gift annuity or trust. Legacy Gift planning does not require a large income or vast estate, only a thoughtful intention to make a difference in your community. If you have made provision for a Legacy Gift or wish to do so, please allow us to recognize this generous act and express to you our deepest appreciation. A Legacy Gift of any size qualifies you for membership in **Legacy Leaders** because every gift has a lasting impact.

Join Us! Since 1937, it has been the mission of CHRISTUS Trinity Mother Frances Health System to provide excellent and compassionate health care to every man, woman and child who enter our doors. It would be an honor to assist you in making a 1937 Founders Fellowship level gift or a planned Legacy Gift to this ministry. For more information please contact Daniel Carrell at 903.606.3866 or daniel.carrell@christushealth.org.

NEONATAL INTENSIVE CARE UNIT

HOPE STARTS HERE

“Hope Starts Here,” said Foundation Executive Director, Robin Rowan, during the opening celebration of the Lucy and John Carr Neonatal Intensive Care Unit in the Louise Herrington Ornelas Center for Mothers and Babies.

On Tuesday, May 7 over 150 guests were in attendance to honor generous benefactors Lucy and John Carr, as well as members of the Louise Ornelas family, and were treated to tours of the wonderful expanded space, which includes a host of new technology. Guests viewed the 28 private patient rooms with advanced light and sound control systems which create a more soothing environment. There are new overnight accommodations for parents, as well as double private rooms allowing twins to stay together. Parents will also have access to a live-feed video monitoring system that will allow them to leave the hospital, but continually check on their child from a smart phone. There is a Care By Parent Room which gives parents an overnight “trial-run” with their infant.

This hotel-room style space is designed to resemble a home, with the nursing staff just outside the door. The NICU at CHRISTUS Mother Frances Hospital - Tyler is the only Level III facility in Smith County. We are so very grateful to the many who contributed to the success of The Yellow Door Campaign, including our A Toast to East Texas 2019 supporters.



MARVELOUS ARTISTS

CHRISTUS Trinity Mother Frances Foundation, in the Regions Bank building on the square in Downtown Tyler, continued its' series of Texas artist installations with two important exhibits in 2019. The Foundation would like to thank Robert Langham III, artist, photographer and curator of our wonderful exhibitions. We are also grateful to Tyler Museum of Art Curator Caleb Bell and Executive Director Chris Leahy for their continued support of these exhibits showcasing local and regional artists.

Robert Langham III - "Brick Street Anthology"

Artist/photographer Robert Langham III used his Hasselblad roll film camera with black and white film to create this interesting group of portraits. Residents in all walks of life, politicians to public servants, newcomers to "Old Tylerites" participated in the project. The exhibit, graciously loaned by the Tyler Museum of Art, was showcased during a lunchtime open house on Friday, March 8.

robertlangham.blogspot.com

Len Kowitz – "Landscapes at 70 mph"

An Artist Open House for the beautiful photographic landscapes of Len Kowitz was held on Wednesday, June 26. Self-taught photographer and founding member of the Houston Center for Photography, Len admits to taking many of the photos in the exhibit while behind the wheel of his car as he travelled through Texas.

<https://www.lenkowitz.com>





THIS GENERATION FIGHTING FOR THE NEXT



Miracle Network Dance Marathon is a movement sweeping the nation that unites college, university and high school students for one common goal; to raise money “For the Kids.” Students involved in a campus dance marathon organization spend a year gaining leadership, teamwork and nonprofit business experience while raising funds and awareness for their local Children’s Miracle Network Hospital. The year culminates with an event on each campus where students get to meet patient families treated at their local hospital, participate in games and dancing and reveal their annual fundraising total.

Stephen F. Austin University

SFA students were Out of This World at the outer space-themed Dance Marathon on their campus in Nacogdoches. Working hard throughout the year, the SFA Dance Marathon program was able to recruit more than 400 event participants, partner with Greek Life on campus and raise over \$30,000!

University of Texas at Tyler

UT Tyler’s campus shined bright with passion for helping kids during their Dance Marathon event. Partnering with local businesses, hosting fundraising events and recruiting student athletes to participate allowed UT Tyler’s Dance Marathon program to raise more funds than last year’s total! Students got to interact with several miracle families and created memories they won’t soon forget.



SUPER FRIENDS
UNITE
TO COMPLETE THE MISSION!

PAGE 22

BE HEROIC

John Williams, Chair of the Foundation Board of Directors

PAGE 23

Financial Statement

PAGE 24

Friends of Foundation Gift Report

“GIVING is the supernatural ability to give of one’s material goods to the work of the Lord consistently, generously, sacrificially, with wisdom and cheerfulness.” Oswald Chambers



John Williams
CHRISTUS Trinity
Mother Frances Foundation
Board of Directors

"There is a hero in all of us,
that keeps us honest, gives
us strength, makes us noble."
May Parker
(Spider-Man's Mom)

2019-2020
Board of Directors
CHRISTUS Trinity Mother
Frances Foundation

John Williams, Chair
Dennis Box
Thomas J. Brown
James A. Caccitolo, M
Randall V. ChildressD
John Gaston
Terry Giles
Chris Glenney
Marilyn Hardy
Steve Hellmuth
Steve Keuer, MD*
Michael Mahfood
Sister Małgorzata Majszyk
Brian McCabe
Andy Navarro*
Laura Redman
Linda Rowe
Scott Smith, MD*
Jerry Spencer
Bishop Joseph E. Strickland
Patrick R. Thomas, MD **
Clayton Whitney, MD
John P. Williams, Chair

* Ex-Officio
**Emeritus



The CHRISTUS Trinity Mother Frances Foundation board wants to express our sincere appreciation to you – the thousands of generous individuals, families and businesses who supported the initiatives of the Foundation this past year. The millions of dollars you contributed will have a heroic impact on health care in Northeast Texas. We invite you to find your names among those listed in the pages that follow. Your gifts embody this concept of heroism and we are grateful for your support and humbled by your ongoing commitment to make a difference. You have shown yourselves to be our Super Friends!

We challenge you to find that same passion going forward. No matter who you are or what you do, there are opportunities to be heroic all around you in the coming year, and we look forward to serving our community with you through the CHRISTUS Trinity Mother Frances Foundation. This next twelve months will bring The Violet Door Project: the expansion of the Birth Center at CHRISTUS Mother Frances Hospital- Tyler. There will be over fifty Children's Miracle Network Hospitals events in which you can participate from the Miracle Run to the KMOO Radiothon. The Women's Board will host its fifth annual A Toast to East Texas, this year supporting The Violet Door Project. We will honor those who do so much for our children through Miracles Begin With You! And a new Miracle Child will share their personal struggles and be the face of hope for CMNH.

There are so many ways that you can be personally involved in our mission to extend the healing ministry of Christ, and have a stake in what happens to our planet. There will always be a new mission to complete as new initiatives are identified, and visionary goals are set for the future and beyond. We offer our continuing pledge to stand shoulder to shoulder with you in the quest for excellence in health care for our families, friends and neighbors.

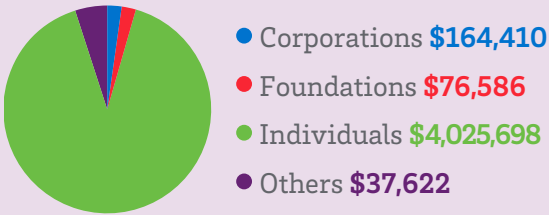
Thank you, from all of us, for helping to guard our galaxy!

John Williams, Chairman
CHRISTUS Trinity Mother Frances Foundation Board of Directors

Financial statement 7.1.18 – 6.30.19

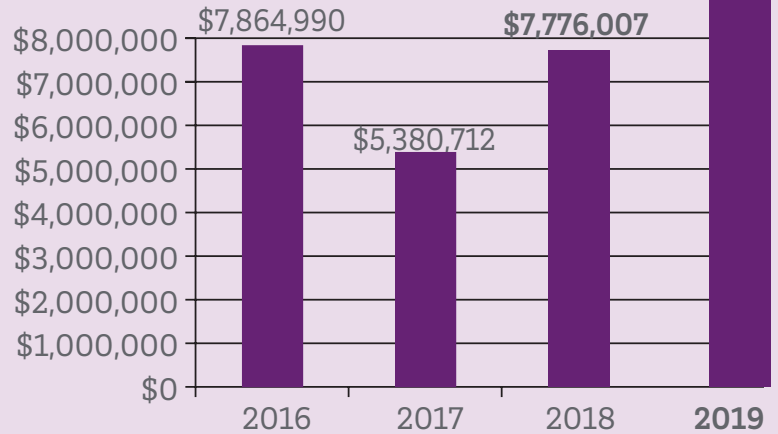
Summary of gift support for CHRISTUS Trinity Mother Frances Foundation

This number reflects total gifts and pledges.



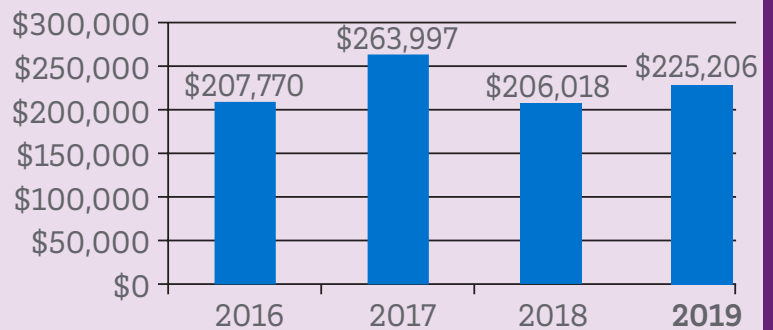
2019 TOTAL: \$4,304,316

Past total gift report



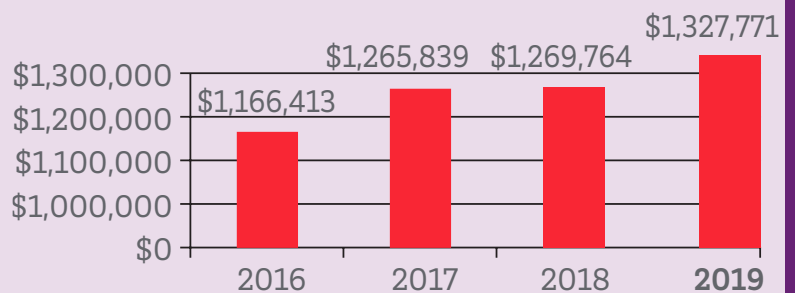
CHRISTUS Trinity Mother Frances Associates "Share the Spirit" Annual Campaign

The Associate Share the Spirit graph demonstrates the increase and impact of care being provided by Associates, caregivers and physicians who donate to the CHRISTUS Trinity Mother Frances Foundation. These funds are restricted for projects, equipment and services designed to benefit the patients of CHRISTUS Trinity Mother Frances Health System.



Children's Miracle Network Hospitals Support

This graph reflects the growth in giving to Children's Miracle Network Hospitals since 2016. These totals include all donations for CMNH from national sponsors, local sponsors, individuals and businesses. This growth has been, and will continue to be, a vital part of CHRISTUS Trinity Mother Frances Health System's success in providing the highest level of care for our smallest patients.





SUPER FRIENDS OF THE FOUNDATION

Gift Report 2019

We are pleased to take this opportunity to thank and recognize our generous supporters. You have made an enduring impact on health care in Northeast Texas this year. Thank you to the individuals, foundations and businesses who have made gifts from July 1, 2018 through June 30, 2019. Every effort has been made to ensure that this list is as complete and accurate as possible, but inevitably some errors or omissions may have occurred.

We appreciate receiving corrections, comments or questions. Please contact the CHRISTUS Trinity Mother Frances Foundation office at (903) 606-4752.

“WHAT MAKES SUPERMAN A HERO IS NOT THAT HE HAS POWER BUT THAT HE HAS THE WISDOM AND THE MATURITY TO USE THE POWER WISELY.”
-CHRISTOPHER REEVE

Foundation Honors

7.01.18 - 6.30.19

Dr. Warren A. Abrameit
 Drs. Jonathan and Amy Hosch
 Ms. Annie R. Worley
 Lorie Adams
 Ms. Krystal Rose
 Anthony Anderson, PA-C
 Anonymous
 Dr. Nicholas S. Andrade
 Mrs. Janet Fair
 Dr. Duane N. Andrews
 Mrs. Margaret E. King
 Mr. Marcus E. Wohl
 Sister Irene Asztemborska
 Mr. and Mrs. Ralph R. Richason
 Misty L. Baggett, FNP
 Mr. John R. Driver
 Robert Masom Bardsley
 Mr. and Mrs. Matt Denson
 Dr. David H. Beaird
 Mr. C. Dewayne Bethea
 Mr. James F. Hubbard
 Ms. Margaret D. Johnigan
 Mr. Roy D. Owens
 Dr. Charles V. Beall
 Anonymous
 Mrs. Terry M. Stephenson
 Dr. Russell Bell
 Ms. Marsha Buchheit
 Mr. and Mrs. Jack J. Neely
 Mrs. P. Kay Riney
 Ms. Joyce A. Story
 June M. Belt, NP
 Mr. and Mrs. Phillip Hughes
 Dr. Todd D. Bengtson
 Mr. William T. Drozd
 Dr. Andrew Berkson
 Mr. William R. Green
 Mr. Sheridan C. Ramos
 Dr. Angelique Brannon-Goedeke
 Mr. and Mrs. Allen F. Schmidt
 Dr. Melita L. Brooks
 Anonymous
 Mr. John R. Driver
 Ms. Judith Dumas
 Ms. Allene E. Parish
 Mr. and Mrs. David L. Seale
 Dr. Kimberley Bryant
 Dr. and Mrs. Roger N. Fowler
 Dr. Larry E. Burch
 Ms. Rosemary Biel

Angela Burrus, FNP-C
 Mrs. Shirley T. McMahan
 Dr. Sheryl Busch
 Mr. Emery S. Cathey
 Mrs. Shirley T. McMahan
 Mrs. Rita-Ann Mitchell
 Dr. Thomas M. Buzbee
 Anonymous
 Mr. Wilburn V. Lunn, Jr.
 Dr. James A. Caccitolo
 H. John and M. Katherine Blake
 Mrs. Janet Fair
 Ms. Marjorie Mustard
 Joan Cappadonna
 Ms. Ruth T. Hogan
 Dr. Andria Cardinali-Stein
 Anonymous
 Mr. and Mrs. Michael Victor
 Dr. Stephanie H. Carl
 Drs. Jonathan and Amy Hosch
 Dr. Jeffrey G. Carr
 Mrs. Shirley H. Guillory
 Mr. Daniel L. Rodell
 Dr. Billy Dan Carson
 Ms. Angela R. Dickey
 Mr. and Mrs. Nolan L. Green
 Mr. and Mrs. Billy W. Marable
 Dr. Jeremy R. Cefalu
 Mr. and Mrs. Ray L. Vaught, Jr.
 Dr. Nirmala Cheatham
 Anonymous
 Thelma S. Childs
 Col. John O. Childs
 Dr. Amby J. Cline
 Ms. Carol A. Kilmon
 Dr. Melissa E. Cloonan
 Dr. and Mrs. Hugh R. Poindexter
 Dr. Steven J. Cohen
 Anonymous
 Mr. and Mrs. John Overstreet, Jr.
 Mr. and Mrs. William D. Wilson
 Dr. Melinda F. Coker
 Mr. and Mrs. Al Etheredge
 Ms. Alice Kaye Robinson
 Dr. Lester B. Collins III
 Ms. Barbara Davis-Scott
 Dr. Douglas C. Coltman
 Anonymous
 Mr. and Mrs. Clyde Dowdle
 Mr. and Mrs. Bobby D. Fitzgerald

Mr. Gary W. Frederick
 Mrs. Susan Z. Hawkins
 Ms. Mildred B. Hill
 Mr. and Mrs. Rogers Pope, Sr.
 Ms. Anna Scogin
 Mr. and Mrs. Gregory C. Weston
 Mrs. Janice L. Wisner
 Doug Conn
 Anonymous
 Dr. Brandon Crim
 Ms. Winifred Washington
 Dr. J. Stuart Crutchfield
 Anonymous
 Rose Ann Cunningham
 Mrs. Sheila Sadler
 Dr. Kenneth D. Cushman
 Ms. Doreen Cade
 Mr. and Mrs. Guy Goodwin
 Ms. Patsy G. Tyner
 Michael W. Deeds, PA-C
 Mr. Aubrey D. Ingram
 Dr. Rachel L. Devaney
 Mr. and Mrs. Richard Bergner
 Mr. Doug Conn
 Claudia B. Dews
 Ms. Connie L. Barnes
 Craig Dickerson
 Davis and Roosth Families
 Mr. Craig Dickerson
 Dr. Charles T. Dickson
 Mr. William M. Miles
 Ji'on Dietz
 Mr. and Mrs. Russell Patterson
 Dr. Emily Dosier
 Mr. Kenneth W. Browning
 Ms. Mary S. Rollins
 Dr. Shawn Dunn
 Anonymous
 Mr. Richard M. Magner
 Dr. H. Katrina Duplechain
 Ms. Deborah D. Keenan
 Mr. and Mrs. Robert Marchell
 Ms. Allene E. Parish
 Mrs. P. Kay Riney
 Mr. and Mrs. William D. Wilson
 Dr. G. Aaron DuVall
 Ms. Tonya Foster
 Kim Dyess
 Mr. and Mrs. Forrest H. Dyess

Dr. Terri L. Eckert
 Ms. Tonya Foster
 Ms. Madeline Unruh
 Dr. Thomas F. Eckert
 Ms. Jacqueline K. Kerlin
 Dr. Billy Eden
 Ms. Margaret D. Johnigan
 Dr. Alan Eli
 Anonymous
 Mr. and Mrs. Robert A. Crosson
 Mr. and Mrs. Randy K. Durossette
 Clarice and Hugh Kirksey
 Dr. Andrea M. Ellis
 Mr. and Mrs. Robert L. Holsomback
 Mr. and Mrs. Ralph W. Stewart
 Dr. Grace C. English
 Ms. Molly Hickman
 Millicent K. Epperson
 Mr. and Mrs. Scott Epperson
 Ms. Megan Finn
 Dr. Neda Esfandiari
 Mr. James R. Anderson
 Ms. Orlene M. McCullough
 Dr. Krystal Estrada
 Anonymous
 Dr. Paul M. Fanning
 Ms. Linda M. Nichols
 Ann Marie M. Fate, FNP-C
 Dr. and Mrs. Jack D. Hollada, DC
 Mr. Melvin R. Nutt
 Dwayne Fikes
 Mr. Marion F. Fikes
 Dr. Marina Y. Flaskas
 Anonymous
 Mr. C. Dewayne Bethea
 Mr. Kenneth W. Browning
 Ms. Eleanor Sutherland
 Dr. Roel O. Flores
 Mr. and Mrs. John F. Reynolds
 Dr. Sheldon Freeberg
 Mrs. Sonja L. Brewer
 Mr. Melvin R. Nutt
 Dr. L. Don Freeman
 Mrs. Martha G. Humphries
 Ms. Marjorie Mustard
 Dr. Gary P. Goodfried
 Mr. and Mrs. Hugh C. Carver
 Dr. Glen S. Graves
 Mr. Emery S. Cathey

Dr. Thomas F. Gregory
 Mrs. Martha G. Humphries
 Mr. Roy D. Owens
 The Gully Boys
 Dr. and Mrs. Kyle L. Gully
 Dr. Kyle L. Gully
 Anonymous
 Mr. and Mrs. Mike DeLong
 Stevee A. Hale
 Mr. and Mrs. Parker Hale
 Ms. Mary A. Randall
 Mr. and Mrs. Rusty Weaver
 Tina G. Hanner, FNP-C
 Ms. Gay H. Moon
 Dr. W. Bruce Harrell
 Mr. and Mrs. Nolan L. Green
 Ms. Corrlia Matlock
 Mr. and Mrs. William D. Wilson
 Dr. Craig Harrison
 Anonymous
 Dr. Meredith Hay
 Ms. Preeni Walgama
 Dr. Hayden G. Head
 Mr. Edward L. Dickey
 Mr. and Mrs. Gary E. Michels
 Dr. David A. Hector
 Anonymous
 Dr. James Hoff
 Ms. Wanda S. Joyce
 Mr. and Mrs. Joe A. Turner
 Ms. Carol Zwan and Mr. Don McClellan
 Nancy Holcek, PA-C
 Anonymous
 Dr. Timothy L. Holcomb
 Mr. and Mrs. Robert A. Crosson
 Dr. Jonathan C. Hosch
 Mrs. Karen S. Canter
 Mr. Uquhardt Gipson
 Mr. and Mrs. Doyle W. Johnson
 Dr. Joel Howell
 Ms. Rosemary Biel
 Dr. Madeline Hunt
 Ms. Tinnie Guidry
 Dr. Lindsey A. Hunter-Ellul
 Anonymous
 Dr. Janet L. Hurley
 Ms. Melody K. Allen
 Dr. Stephen A. Hutto
 Ms. Patricia E. Young
 Dr. Julia D. Hwang
 Ms. Marsha Buchheit
 Mr. and Mrs. Richard M. Carroll
 Mr. and Mrs. Scott F. Fossey
 Ms. Frances L. Goucher
 Mr. and Mrs. Gerald E. Kuklewicz
 Mr. and Mrs. Michael Victor
 Mr. and Mrs. Bob Waldrop
 Dr. C. Noah Israel
 Ms. Rosemary Biel
 Ms. Louise Clarkston
 Dr. Chelsea Jackson
 Anonymous
 Linda and Tommy Strong

Dr. Burkitt W. Jensen
 Mr. and Mrs. Gregory C. Weston
 Dr. George W. Kariampuzha
 Mr. and Mrs. Randy K. Durossette
 Mr. and Mrs. Ralph W. Stewart
 Dr. Sylvia A. Kariampuzha
 Anonymous
 Mr. and Mrs. Gerald Bellis
 Mrs. Martha D. Day
 Mr. Uquhardt Gipson
 Mr. William R. Green
 Mr. and Mrs. Richard Perryman
 Dr. Janet R. Keais
 Mr. and Mrs. Robert Marchell
 Dr. Steven P. Keuer
 Anonymous
 H. John and M. Katherine Blake
 Ms. Dorothy L. Clark
 Mr. and Mrs. John H. Minton, Jr.
 Mr. Dan C. Woldert, Jr.
 Dr. Andrew K. Kirkpatrick
 Anonymous
 Col. and Mrs. Emery J. Crane (Ret)
 Mr. Gary W. Frederick
 Ms. Emma J. Henson
 Mr. Clyde M. Mills
 Mr. and Mrs. John H. Minton, Jr.
 Mr. Roy D. Owens
 Darlene Kirkpatrick
 Mr. and Mrs. Ray J. Kirkpatrick
 Dr. Donald Knarr
 Mr. and Mrs. H. B. McMahan
 Len Kowitz
 Ms. Gail Kowitz
 Dr. Kenneth B. Kummerfeld
 Anonymous
 Mrs. Joanna G. Baldwin
 Mr. and Mrs. Zola L. George
 Mr. Vernon Havis
 Mr. and Mrs. Richard A. Pinto
 Ms. Janelle D. Sitton
 Ms. Julia Watkins
 Dr. Peter H. Langsjoen
 Mr. and Mrs. Leonardo Garcia
 Dr. John A. Larrinaga
 Mr. and Mrs. Edward G. Holt
 Drs. Jonathan and Amy Hosch
 Ms. Lucy A. Taft
 Dr. Arielle S. Lee
 Mr. and Mrs. James F. Crawford
 Dr. Scott M. Lieberman
 Ms. Nan Mann
 Dr. Sauyu Lin
 Mr. Gary W. Frederick
 Mr. and Mrs. H. B. McMahan
 Dr. Jerome P. Lisk
 Mrs. Nancy Townes
 Dr. James A. Lively
 Mr. and Mrs. Richard M. Carroll
 Dr. Amanda N. Long
 Anonymous
 Ms. Deborah D. Keenan
 Dr. Lisa Lowry
 Anonymous

Dr. Richard W. Lowry, Jr.
 Ms. Charis Singleton
 Dr. Ming Lu
 Anonymous
 Mr. and Mrs. Randy K. Durossette
 Mr. Roger McLaughlin
 Ms. Nelleva M. Vining
 Sister Margo Majszczyk
 Ms. Veronica Culver
 Dr. Joseph M. Martellotto
 Mr. Doug Conn
 Deborah Mastin
 Anonymous
 Dr. James D. McAndrew
 Mr. and Mrs. Gerald Bellis
 Dr. O. Edwin McClusky
 Dr. and Mrs. Kenneth D. Cushman
 Dr. Roger L. McCown II
 Mr. and Mrs. Charles Morgan
 Mr. and Mrs. Allen F. Schmidt
 Mrs. Mary W. Young
 Dr. Machele A. McDowell
 Mrs. Martha G. Humphries
 Dr. Robert A. McKinney, Jr.
 Anonymous
 Mr. and Mrs. Robert E. Ensch
 Mr. Vernon Havis
 Mr. and Mrs. Phillip Hughes
 Dr. Mark D. Miller
 Ms. Kimberly S. Allen
 Dr. William W. Miller
 Ms. Kimberly S. Allen
 Ms. Ethel L. Fort
 Clarice and Hugh Kirksey
 Mrs. Janice L. Wisner
 Dr. Frank I. Navetta
 Anonymous
 Patsy M. Neighbors
 Quitman Athletic Booster Club
 Cathy Newman
 Mr. and Mrs. Forrest H. Dyess
 Dr. Kenneth Nixon
 Anonymous
 Ms. Marchita Bodin
 Mr. James G. Ragle
 Dr. Kevin A. Nixon
 Mrs. Martha G. Humphries
 Dr. Michael J. Norton
 Mr. and Mrs. Al Etheredge
 Mr. and Mrs. Roger S. Strain
 Mercedes A. Noteware
 Mr. and Mrs. Russell Patterson
 Evelyn Nutt
 Mr. Melvin R. Nutt
 Dr. P. Daniel Obesso
 Mr. Gene Geaslin
 Ms. Joyce A. Story
 Linda and Tommy Strong
 Dr. Laura E. O'Halloran
 Drs. Jonathan and Amy Hosch
 Mrs. Nancy Ireland
 Mr. and Mrs. Roger S. Strain
 Dr. Lloyd M. Olsen
 Anonymous

Mr. and Mrs. J. David Bain
 Mr. and Mrs. Doyle W. Johnson
 Ms. Barbara Klinker
 Mr. and Mrs. Robert H. Pettit
 Mr. and Mrs. Joe A. Turner
 Mr. and Mrs. Weldon E. Viertel
 Ms. Carol Zwan and Mr. Don McClellan
 Mrs. Peaches Owen
 Mr. and Mrs. John K. Owen
 Dr. Oscar A. Paniagua
 Mrs. Janet Fair
 Mr. James T. Hargrove
 Mr. and Mrs. Robert Marchell
 Dr. Shreya V. Patel
 Mr. Melvin R. Nutt
 Dr. Todd A. Patrick
 Mrs. Nancy Townes
 Amy Pena, PA-C
 Ms. Barbara Davis-Scott
 Dr. Charles M. Perricone
 Mr. Vernon Havis
 Linda and Tommy Strong
 Dr. Alexandre A. Petrakian
 Mr. and Mrs. J. David Bain
 Ms. Ruby Ballesteros
 Mrs. Shirley H. Guillory
 Mr. and Mrs. H. B. McMahan
 Mr. Frances McMullen
 Mr. Alvin E. Simek
 Dr. Erin L. Phillips
 Col. and Mrs. Emery J. Crane (Ret)
 Dr. W. F. Phillips
 Mr. and Mrs. Robert A. Crosson
 Dr. Peter Pitonak
 Anonymous
 Mr. and Mrs. Nolan L. Green
 Dr. Matthew T. Proctor
 Mrs. Beverly J. Beranek
 Dr. Randy C. Randall
 Mr. and Mrs. Phillip Hughes
 Tobias P. Rebmann, ACNP
 Mrs. Shirley H. Guillory
 Dr. Margaret R. Reitmeyer
 Ms. Ivonne Aragon
 Mr. and Mrs. William E. Cook
 Dr. Donald A. Richards
 Anonymous
 Dr. Lee H. Ridenour
 Anonymous
 Mr. and Mrs. John M. Ashby
 Mrs. Janet Fair
 Mrs. Nancy Ireland
 Ms. Sara L. Raibourn
 Ms. Annie R. Worley
 Dr. Jerry W. Rodgers
 Mr. Emery S. Cathey
 Dr. Michael E. Russell II
 Mr. Michael B. McGinney
 Terrie Sadler
 Mr. and Mrs. Forrest H. Dyess
 Dr. C. Fagg Sanford
 Anonymous
 Mr. James L. Madison

Foundation Honors

7.01.18 - 6.30.19

Mr. and Mrs. John H. Minton, Jr.
Mr. and Mrs. Robert H. Pettit
Mr. Dan C. Woldert, Jr.
Ms. Annie R. Worley
Dr. Pochin and Mr. Sheng Yin
Dr. Mark W. Saunders
Ms. Emma J. Henson
Mr. Roy D. Owens
Mrs. Terry M. Stephenson
Ms. Anita J. Warren
Leslie Hyden Scheer
Ms. Anita Hyden
Dr. Heidi E. Schneider
Mr. and Mrs. Randy K. Durossette
Ms. Jacqueline K. Kerlin
Ms. Corrilia Matlock
Dr. Hans Schuricht
Mr. Roy D. Owens
Ms. Winifred Washington
Dr. Jerry W. Schwarzbach
Mr. Michael B. McGinney
Dr. John W. Scroggins
Anonymous
Ms. H. Audrey Chartier
Dr. and Mrs. Larry M. Chism
Ms. Betty Rose Ferrell
Mrs. Patricia S. Fowler
Mr. and Mrs. Joe D. Kendrick
Mr. Robert G. Kiermaier
Mr. and Mrs. James D. McClure
Ms. Linda M. Nichols
Mr. and Mrs. Richard Perryman
Ms. Mary M. Sedberry
Mr. and Mrs. James H. Sellers
Dr. Amy K. Simpson
Mrs. Melba G. Carter
Dr. John B. Sims
Mrs. Sonja L. Brewer
Mr. and Mrs. Zola L. George
Mr. Roy D. Owens
Mr. and Mrs. Gregory C. Weston
Ms. Carol Zwan and Mr. Don
McClellan
Miranda Sims, FNP-C
Mr. John R. Driver
Dr. Suman Sinha
Anonymous
H. John and M. Katherine Blake

Dr. Eric R. Smith
Anonymous
Mr. and Mrs. Toby G. Davis
Reverend and Mrs. Donald F. Osada
Mr. and Mrs. Charles J. Taylor
Ms. Ann C. Wallace
Mr. Marcus E. Wohl
Dr. Robert W. Smith
Mrs. Margaret E. King
Dr. Sally L. Smith
Anonymous
Mr. and Mrs. Billy W. Marable
Ms. Winifred Washington
Dr. Todd P. Smith
Mr. C. Dewayne Bethea
Dr. W. Herd Snider
Mr. Jeff Austin III
Dr. Glen W. Sorrentino
Ms. Ethel L. Fort
Mr. Ronald C. Nixon
Ms. Martha A. Parker
Dr. Stephen Spain
Anonymous
Dr. Charla C. Spencer
Ms. Rose K. Brown
Dr. James N. Stanford
Mrs. Joan W. Jones
Mr. Sheridan C. Ramos
Mrs. Nancy Townes
Katie Storrs, PA-C
Mr. and Mrs. Michael Victor
Dr. J. Gregory Stovall
Mr. James R. Anderson
Dr. Jingdong Su
Ms. Anita J. Warren
Bonnie A. Tincher, CNS
Barbara and Billy Bass, Jr.
Dr. J. Dan Toney
Anonymous
Dr. Viet Tran
Mrs. Janet Fair
Dr. John Turner
Mr. James T. Hargrove
Mr. Daniel L. Rodell
Dr. William F. Turner, Jr.
Anonymous
Mr. and Mrs. Zola L. George

Dr. Matthew A. Vierkant
Anonymous
Mrs. Beverly J. Beranek
Mr. Michael W. McEwen
Ltc. Otto R. Vanderstay (Ret)
Mr. Frank Waggoner
Dr. Mark E. Vig
Mr. James R. Anderson
Mr. and Mrs. Gerald Bellis
Dr. Thomas B. Volatile
Anonymous
Ms. Tinnie Guidry
Mr. James T. Hargrove
Dr. Ronald F. Vrnak
Mr. Michael B. McGinney
Dr. Svetislava J. Vukelja
Anonymous
Mr. and Mrs. Hugh C. Carver
Mr. and Mrs. Al Etheredge
Mr. and Mrs. Jack J. Neely
Ms. Eleanor Sutherlin
Dr. R. Brent Wadle
Anonymous
Mr. and Mrs. Richard Perryman
Dr. Ellen Walraven
Anonymous
Mrs. Sonja L. Brewer
Mr. and Mrs. Richard A. Pinto
Clayton and Landrey Walsh
Dr. and Mrs. James Fox
Dr. Aimee Massey
Jennifer and Kevin Walsh
Mr. and Mrs. Keith Buckner
Dr. Craig C. Weaver
Mr. James N. Bobbitt
Dr. Kent P. Webb
Mr. and Mrs. Bobby D. Fitzgerald
Dr. Kimberly E. Wegener
Mr. and Mrs. William D. Saban
Dr. Stanislav Weiner
Anonymous
Ms. Allene E. Parish
Ms. Carol Zwan and Mr. Don
McClellan
Dr. Lilika A. White
Mr. and Mrs. John E. Albright, Jr.
Mr. Leon Christopher
Ms. Barbara Davis-Scott

Mr. Alvin E. Simek
Laura E. Whitfield, NP
Anonymous
Mr. and Mrs. John M. Ashby
Dr. Clayton E. Whitney
Mr. and Mrs. Phillip Hughes
Ms. Margaret D. Johnigan
Mr. Richard M. Magner
Mr. Marcus E. Wohl
Ms. Carol Zwan and Mr. Don
McClellan
Dr. R. Clay Williams
Anonymous
Dr. Jennifer R. Wilson
Mr. and Mrs. Hugh C. Carver
Mr. Mark A. Leger
Ms. Janet Masker
Dr. O. Ray Wilson
Anonymous
Mrs. Joanna G. Baldwin
Ms. Ruby Ballesteros
Mr. and Mrs. William E. Cook
Mr. William R. Green
Dr. and Mrs. Jack D. Hollada, DC
Mr. Melvin R. Nutt
Mr. and Mrs. David E. Pierson
Ms. Lucy A. Taft
Mr. and Mrs. Bob Waldrop
Dr. Drew H. Wyrick
Anonymous
Dr. Kai Xia
Mr. and Mrs. Harold R. Denson
Mr. Edward A. Drummond
Mr. and Mrs. Randy K. Durossette
Mr. Roy D. Owens
Dr. Daren P. Yeager
Ms. Mary M. Sedberry
Dr. Habte Yimer
Ms. Emma J. Henson
Mr. Hong-Kyu Park
Dr. Anwar D. Zaman
Mr. Dan C. Woldert, Jr.
Dr. Joseph Zasik
Ms. Corrilia Matlock
Dr. Anne Zeorlin
Col. and Mrs. Emery J. Crane (Ret)





Foundation Memorials



Foundation Memorials 7.01.18 – 6.30.19

Patricia Hlavin Bean
Mr. Kenneth L. Bean
Edna Louise Bonham
Ms. Veronica Culver
Peaches and Bruce Brookshire
Mrs. Judy P. Clymer
Polly Carrington
Ms. Julian G. Campos
Betty Carroll
Mr. and Mrs. John S. Hamlin
Bobby Carroll
Ms. Mozell A. Carroll
Wilbur Chaney
Mrs. Sheri Chaney
Bobbie Jean Clark
Mrs. Marilyn M. Thompson
Annie Cloud
Mr. Charles C. Couser
Michael Conner
The McClendon House Society, Inc.
Ruth G. Cole
Mr. Larry V. Tidwell
Donald G. Cook
Ms. Frances A. Cook
Cathy Crow
Ms. Suzanne C. Alexander
Donna Lee Cunningham
Mr. and Mrs. Kenneth C.
Cunningham
Fern J. Finley
Mr. and Mrs. Ron Finley
Paul and Atha Freels
Ms. Barbara Dunbar
Elizabeth Kruse Furler
Mr. Edward Furler, Jr.
Mack Gilbert
Ms. Bettye H. Gilbert
Gracie Griffin
Mr. George Griffin
Stevee Ann Hale
Mr. and Mrs. Parker Hale
Ms. Mary A. Randal
Mr. and Mrs. Rusty Weaver

Rosa M. Halerumal
Anonymous
Mr. and Mrs. Marvin D. Majors
Davis Hoffman-Roach
Mrs. Linda L. Wright
Lynn Hunter
Dr. and Mrs. Carey A. Clark III
Frank Jakubik
Ms. Charlsej Jakubik
Martha Jameson
Mr. and Mrs. George Jameson
Richard Johnson
Mr. Bobby R. Harman
Dr. Edward J. Keuer, Jr.
Ms. Cheri E. Kirkland
Dr. and Mrs. Michael L. Leahy
Mr. and Mrs. Joe D. Huffaker
Joyce Lollar
Ms. Shellwyn J. Brown
Bud Lowry
Anonymous
Mingxi Luo
Mrs. Marilyn M. Thompson
Nolan Edward Manziel
Mr. and Mrs. James W. Arnold, Jr.
Mr. and Mrs. Robert N. Bergfeld, Sr.
Mr. Paul Bruechner
Mr. and Mrs. Chris Bunt
Employees of Citizens 1st Bank
Mr. and Mrs. Scott F. Fossey
The Maurice Korkmas Family
Mr. and Mrs. James S. Robertson, Jr.
Jed Swink and Mary Irwin
The Texas Unlimited Fun Flyers
Mr. Perry Thompson, Jr.
Mr. and Mrs. Kelly W. Walker
Anita March
Mr. and Mrs. Joe D. Huffaker
Kenneth W. McAnally
Ms. Charlotte N. McAnally
Dr. O. Edwin McClusky
Dr. and Mrs. Kenneth D. Cushman

Julie Miller
Mrs. Marilyn M. Thompson
Vera Mills
Mr. and Mrs. Joe D. Huffaker
Judith A. Naleid
Mr. William M. Naleid
Edgar R. O'Donnell
Ms. Dorothy L. Clark
Louise H. Ornelas
Mr. and Mrs. Bruce C. Faulkner
Paul Padgett
Mr. and Mrs. John S. Hamlin
Ramanbhai Patel
Mr. Shantaben Patel
Jimmie Lou and M. G. "Bubba" Ray
Mr. Randy G. Ray
Ferris J. Renfro
Anonymous
Mr. and Mrs. Marvin R. Richey
Dr. Monique R. Mills
Roy Glen Riley
Ms. Leetta Riley
DeVonte' Rose
Ms. Shimika L. Miles
Lisa Safford
Mr. and Mrs. M. Earl Davis
Tracy Sanders
Ms. Armenta S. Plachy
Michael Sheeran
Anonymous
Martha Beryl Jones Smith
Mr. and Mrs. Jon Burmeister
Mr. and Mrs. Clifton E. Hughes, Jr.
Ms. Margaret J. Lam
Mr. and Mrs. Michael K. Truman
Ms. Martha G. Warner
William A. Stanley
Ms. Joyce E. Stanley
Wanda Teegarden
Mr. and Mrs. Bobby G. Lambert
Mary Dale Thomas
Mr. and Mrs. David Rippy

Izilda G. Thompson
Anonymous
Alan Dean Titus
Ms. Mary Jo Henson
Farah Vagefi
Ms. Margaret E. Adams
Mr. and Mrs. Tom B. Walker, Jr.
Mr. Gerald W. Lambert
Dustin Ryan Walls
Mr. and Mrs. Gregory Allen
Bland Ward
Ms. Deborah K. Marshall
Mrs. Maude W. Marshall
Johnie Watson
Ms. Mary Ann Eblen
Tracie D. Watson
Ms. K. K. Stephens
Dr. D. Elliott Whitley
Anonymous
Dr. Shaun York
Shilia Wiley
Ms. Rosie M. Robinson Trimble
Mary Kathleen Ellis Willis
Ms. Nelda R. Lamont
Willie T. Wynn
Mrs. Joann Wynn
Watson W. Wise
Watson W. Wise Foundation
Doyle Ray Woolard
Mrs. Patricia A. Woolard



Foundation Donors

THANK YOU
DONORS!

Foundation Donors 7.01.18 - 6.30.19

A. E. Shull & Company
Abeltd Enterprises
ACell, Inc.
Mr. Willie L. Adcock
Ms. Betty J. Adkins
Advanced Health Media
Mr. and Mrs. John E. Albright, Jr.
Mr. and Mrs. Gerald M. Alexander
Mr. and Mrs. Danny R. Allen
Mrs. Darla M. Allen
Amgen USA
Dr. and Mrs. Kenneth L. Anderson
Dr. and Mrs. Nicholas Andrade
Anonymous
Mr. Christian O. Anyadike
Aramark
Mr. and Mrs. Fred J. Arrambidez
Ms. Lorene Ashby
AstraZeneca Pharmaceuticals LP
ATRELLAS
Austin Bank
Autumn Leaves Nursing and Rehab, Inc.
Drs. Harshivinderjit S. and Neena Bains
Mr. Kenneth Baker
Mr. Jean E. Bammel
Bannister Plumbing
Mr. William Barfield
Ms. Joan H. Barris
Mr. and Mrs. Michael Barron
Ms. Martha J. Barton
Mr. Manfred E. Bartsch
Barbara and Billy Bass Charitable Fund at East
Texas Communities Foundation
Mr. and Mrs. Trevor Bates
Ms. Julie Battles
Mrs. Darla Beaird
Ms. Virginia C. Beene
Ms. Marlene S. Bellamy
Mr. Robert A. Benson
Mr. and Mrs. Richard Bergner
Ms. Rosemary Biel
Mr. David Billingsley
BlackRock Financial Management, Inc./

Merrill Lynch
Ms. Cleta Blair
Mr. and Mrs. Jeff Block
Ms. Colleen E. Bloss
Mr. Marvin D. Boatright
Boehringer Ingelheim Pharmaceuticals
Boston Scientific Corporation
Mr. and Mrs. Michael J. Bosworth
Mr. and Mrs. James H. Bowers
Mr. and Mrs. Dennis E. Box
Ms. Margaret Bradley
Mr. and Mrs. Charlie E. Bradshaw
Mr. Roy L. Branham
Mr. and Mrs. Steve Bratteli
Mr. and Mrs. Thomas E. Brazier
Mrs. Sonja L. Brewer
Mrs. Carrie W. Brookshire
Mr. Robert R. Brousseau
Mrs. Earnestine Brown
Dr. and Mrs. Jonathan T. Brown
Mr. Ronnie F. Brown
Mr. Warren Brown
BTG International, Inc.
Mrs. Anita Buchmeyer
Mrs. Marilyn P. Budde
Mr. Ray Bunch
Mr. and Mrs. Fred Bunker
Ms. Mary L. Burns
Mr. Robert M. Byrd
C. R. Scrubs
Dr. and Mrs. James A. Caccitolo
Mrs. Roxanne J. Caccitolo
Mr. and Mrs. Hubert M. Cameron
Mrs. John M. Campbell
Mrs. Pat Camron
Mr. and Mrs. Joseph F. Canterbury, Jr.
Mr. Zeb Cantley
Canton Eaglette Volleyball Program
Mr. Jimmy C. Capel
Mr. Joseph A. Capps
Cardiovascular Systems, Inc. (CSI)
Ms. Joy B. Cariker
Mr. and Mrs. Matt Carpenter

Reverend and Mrs. John P. Carr
Mrs. Barbara Carrell
Mr. Jerry L. Carson
Mr. David Carter
Mr. Emery S. Cathey
Mr. and Mrs. Darrell Chase
Ms. Khom Chea
Mr. and Mrs. Martin E. Cheney Jr.
Mr. Ron D. Cherry
Mr. and Mrs. Randall V. Childress
Col. and Mrs. John O. Childs
Choice Homecare
CHRISTUS Health
CHRISTUS Trinity Mother Frances Health
System Volunteers
Clarence E. Moore Trust
Ms. Dorothy L. Clark
Ms. Myra C. Clift
Ms. Cleta Close
Clovis Oncology, Inc.
Mr. and Mrs. Steve Conaway
Cook Medical
Mrs. Michelle L. Cook, NP
Mr. and Mrs. W. Paul Cooper
Mr. and Mrs. M.L. Cornett
Mr. Joe Costello
Mr. and Mrs. Ronnie D. Coston
Ms. Julia C. Cox
Col. and Mrs. Emery J. Crane (Ret)
Dr. and Mrs. J. Stuart Crutchfield
Mr. and Mrs. John C. Cumming
MSG Frederick A. Cunningham, USA (Ret)
Dr. Cynthia T. Curry and Mr. Mark Alexander
Mr. and Mrs. Robert C. Curtis
Dr. and Mrs. Kenneth D. Cushman
Drs. Dabasish and Meher Dasgupta
Mr. James H. Davignon
Ms. Bettye Davis
Mr. Edward D. Davis II
Mr. and Mrs. Richard C. Davis
Mr. and Mrs. Robert S. Davis Jr.
Mr. and Mrs. Toby G. Davis
Ms. Barbara DavisScott

Foundation Donors 7.01.18 – 6.30.19

Mrs. Martha D. Day
 Dr. Rachel and Mr. Matthew DeVaney
 Mr. and Mrs. Ken Dietz
 Mr. Darren Dobbs
 Mr. and Mrs. Clyde Dowdle
 Mr. and Mrs. Stephen R. Drake
 Mr. Edward A. Drummond
 Mr. and Mrs. Ronald W. Duncan
 Mr. and Mrs. William E. Dunnam
 Ms. Julie A. Duren
 Mr. and Mrs. Johnny W. Dyer
 Mr. and Mrs. Joe C. Eakin III
 Dr. and Mrs. David R. Earhart
 East Texas Communities Foundation, Inc.
 Ms. Judith D. Elliott
 Dr. Andrea and Mr. Jason Ellis
 Mr. and Mrs. Jim Ellis
 Ervin M. Emmert
 Epic
 Mr. Wayne Ericson
 Mr. and Mrs. Erik A. Eriksen
 Mr. and Mrs. Charles O. Etheridge
 Ms. Charlotte Ethridge
 Mrs. Janet Fair
 Ms. Rosalind Ann Fairweather
 Ms. Louise M. Farley
 Mr. Tim W. Farley
 Mr. and Mrs. Jose A. Feliciano
 Ms. Betty Rose Ferrell
 Ms. Carolyn Fields
 Mr. and Mrs. J. W. Fields
 Mr. Fred R. Files
 Lt. General Howard M. Fish
 Ms. Barbara T. Fisher
 Casey Fisher
 Mrs. Jane B. Ford
 Ms. Ethel L. Fort
 Mr. and Mrs. Scott F. Fossey
 Mr. Malvin Fowler
 Mr. and Mrs. Billy Fox
 Mr. Johnny Fralicks
 Ms. Carolyn Frazier
 Fresenius Kabi USA, LLC
 Mr. and Mrs. Dennis W. Frey
 Mr. Edward Furler, Jr.
 Mr. and Mrs. Clyde R. Futrell
 Ms. Mary Ann Garrett
 Mr. and Mrs. Harley J. Gary
 Genentech, Inc.
 Mr. and Mrs. Joe I. Gentry
 Geonetric, Inc.
 Mr. and Mrs. Roy G. Gilbreath
 Ms. Salle Ann S. Gill
 Mr. and Mrs. James Gillingham
 Mr. Jimmy D. Glasgow
 Miss Mary E. Glenn
 Mr. and Mrs. J. Christopher Glenney
 Mrs. Judith R. Glenney
 Mr. Olaf F. Gouchie
 Mr. Fredrick B. Gould
 Ms. Sara G. Gravino
 Ms. Renee Gray, NNPC and Mr. John Murphy
 Joyce and Zelick Greenberg Donor Advised
 Fund at East Texas Communities Foundation
 Ms. Martha J. Gresham
 Mr. and Mrs. Don Griffin
 Ms. Winnie Grissaffi
 Mr. Charles E. Groce
 Mr. William Groce
 Mr. and Mrs. Randall D. Grooms
 Mrs. Gloria Guilfoyle and Ms. Paula G. Hughes
 Mr. and Mrs. Jeffrey L. Haas
 Estate of C. M. Haddad
 Ms. Linda B. Ham
 Mr. and Mrs. Glen T. Hamilton
 Mr. and Mrs. Raymond D. Hamilton
 Ms. Patricia A. Hampton
 Mr. and Mrs. James D. Hamrick
 Mr. and Mrs. Harry J. Hardisty
 Mr. and Mrs. John C. Hardy
 Mr. and Mrs. Steve Hardy
 Mrs. Peggy Z. Harraid
 Mr. Vernon Havis
 Ms. Connie H. Hawkins
 Msgt. Robert J. Hawkins (Ret)
 Mr. John Hay
 Mr. William P. Hayde
 Estate of Meredith Haynes
 Mr. N. W. Hays
 Dr. and Mrs. Steven J. Helf
 Ms. Mary Henderson
 Mr. and Mrs. Randal R. Hendrix
 Ms. Onita Henson
 Ms. Sue Herren
 Mrs. Freddie Herrington
 Mr. and Mrs. Robert Hindman
 Dr. and Mrs. Jack D. Hollada, DC
 Ms. Sally Hosea
 Mr. and Mrs. J. R. Howard
 HSC Acquisition, LLC
 Mr. James F. Hubbard
 Mr. and Mrs. Joe D. Huffaker
 Mr. and Mrs. Lester Hughes
 Ms. Joan G. Hutchins
 Mr. Aubrey D. Ingram
 Ms. Shirley J. Inselman
 Dr. and Mrs. C. Noah Israel
 Ms. Devoria C. Jackson
 Mr. and Mrs. Alan R. Jackson
 Mrs. Mary E. Jackson
 Ms. Charlsey Jakubik
 Janssen Pharmaceuticals, Inc.
 Dr. Carolyn G. Jenks
 Johnson & Johnson
 Mr. James W. Johnson
 Mr. Jessie J. Johnson Jr.
 Ms. Linda L. Johnson
 Mr. Robert K. Johnson
 Dr. and Mrs. Walter L. Johnson
 Mr. and Mrs. J. Alan Jones
 Ms. Lillian B. Jones
 Ms. Nevelyn Jones
 Mr. and Mrs. Thomas E. Jones
 KCI USA, Inc.
 Drs. Ron Hekier and Rachael A. Keilin
 Mr. and Mrs. Jack Kempenaar
 Ms. Burnell Kennedy
 Ms. Kathryn Kennedy
 Dr. and Mrs. Steven P. Keuer
 Mrs. Sue Green Kiely
 Ms. Betty Kinsey
 Mr. C. Leach Klotz, Jr.
 Mrs. and Mr. Dorothy L. Knowlton
 Mr. James E. Kolb
 Dr. and Mrs. Kenneth B. Kummerfeld
 Mr. and Mrs. Ken Lackner
 Mr. James R. Lambert
 Mr. and Mrs. Jack B. Lankford, Jr.
 Ms. Evelyn M. Law
 Mr. and Mrs. Harry L. Leatherwood
 Ms. Charlsye J. Lee
 Ms. Kerry L. Lemaire
 Mr. and Mrs. James T. Lestor
 Dr. and Mrs. Feng Li
 Ms. Wanda S. Liles
 Dr. and Mrs. Sauyu Lin
 Lindale ISD
 Mr. Dwight Lindop
 Mr. Harold R. Liverett
 LMT Wealth Management Group Merrill
 Lynch
 Mrs. Yvonne K. Loving
 Mr. and Mrs. William C. Lust
 Ms. Doris J. Madkins
 Mr. and Mrs. Michael E. Mahfood
 Ms. Janet L. Majors
 Mr. and Mrs. James L. Mallory
 Mr. Donald L. Mann
 Ms. Juanita R. Manning
 Mr. and Mrs. B. Ted Mapes
 Mr. and Mrs. Robert Marchell
 Mr. Carl D. Marquis
 Mr. E. Dewayne Marsh
 Ms. Angela F. Marson
 Ms. Debbie Maughan

Foundation Donors 7.01.18 – 6.30.19

Mr. Bob W. Maupin
Mr. Gordon J. Mayer, Jr.
Mr. Marvin S. Mayer
Mr. and Mrs. James J. Mazzu
Ms. Jacqueline McCalla
Ms. Virginia R. McCalla
Ms. Carol McCarthy
Mr. and Mrs. Brent McCauley
Mr. Michael W. McEwen
Mr. and Ms. M. G. McGee
Mr. and Mrs. John McKinney
Mr. and Mrs. H. B. McMahan
Mr. and Mrs. Randy D. Medders
Drs. Nicholas and Michelle Medel
Medtronic Inc.
Medtronic Neurological
Mr. and Mrs. Clarence C. Meiske
Merck & Co., Inc.
Ms. Berenda A. Mewborn
Dr. Joseph F. Milan
Mr. Melburn E. Minter
Mr. and Mrs. Jamal Moharer
Ms. Kay Monigold
Mr. Billy L. Montgomery
Ms. Dorothy J. Moody
Mr. Michael W. Moore
Ms. Sarah V. Moreland
Mr. and Mrs. Charles Morgan
Dr. Brenda and Mr. Jim Morris
Mr. Preston D. Morton
Mr. and Mrs. Walter Moseley
Mr. James O. Moses
Mr. and Mrs. Artis B. Mosley, Jr.
Mr. and Mrs. Carlos M. Munoz
Mr. Randy N. Myers
Myriad Genetics, Inc.
Mr. and Mrs. James Napper
Ms. Paula A. Nash
Dr. and Mrs. Fadi Nasrallah
Mr. and Mrs. Andy Navarro
Mr. and Mrs. Bryan Neal
Mr. Jasper T. Neal
Ms. Glenda Neel
Mr. and Mrs. Robert Neff
Tobie Neller
Mr. Wayne R. Nelson
Network for Good
Dr. and Mrs. Jerry A. Newton
Mr. and Mrs. William W. Newton
Niblack Charitable Fund at East Texas
Communities Foundation
Mrs. Una Nichols
Dr. Brett R. Noteware
Mr. W. Thomas Nourse
NuTech, Inc.

Mr. Melvin R. Nutt
Ms. Patricia A. O'Brien
Mrs. Clara C. O'Donnell
Mr. and Mrs. Charles R. Oliphint
Dr. and Mrs. Lloyd M. Olsen
Ms. Patricia R. Olson
Mr. and Mrs. Alfred W. Olsson, Jr.
Mr. and Mrs. Michael T. O'Neill
Onyx Pharmaceuticals, Inc.
Mr. Joseph Z. Ornelas
Estate of Louise H. Ornelas
Mr. and Mrs. John K. Owen
Louis and Peaches Owen Family Foundation
Mrs. Peaches Owen
Mr. and Mrs. Carl M. Owens
Ms. Sheryl Rogers Palmer
Ms. Carolyn A. Parkhill
Ms. Dorothy L. Patton Harris
Mr. Michael L. Peerson
Ms. Linda G. Perry
Pfizer Inc.
Mr. Dwight T. Phelps
Mr. and Mrs. Todd Phillips
Piney Woods Regional Advisory Council
Mr. and Mrs. Richard A. Pinto
Dr. and Mrs. Paul W. Pitts
Ms. Jeannie Pollan
Mr. and Mrs. Danny R. Potter
Mr. and Mrs. Michael R. Powell
Mr. Paul E. Price
Mr. and Mrs. Jason J. Proctor
Prosperity Bank
Ms. Sarah D. Puckett
Mr. and Mrs. Bill Pulliam
Puma Biothechnology
Ms. Jannine A. Purcell, NP
Ms. Penny Quinn
Ms. Sara L. Raibourn
Mr. Sheridan C. Ramos
Mr. and Mrs. Louis I. Ray
Mr. Robert W. Ray
RE/MAX First Choice
Mr. and Mrs. Richard R. Redman
Regions Bank Tyler
Mr. Johnny C. Reid
Dr. Margaret R. Reitmeyer
Mr. and Mrs. Robert Rekieta
Ms. Stephanie J. Riley
Mr. and Mrs. J. Reed Rippy
Mr. and Mrs. Michael G. Robards
Mr. Daniel L. Rodell
Mr. Randy Rodrigues
Mrs. Frances T. Rogers
Mr. Juan Rojas
Ms. Mary S. Rollins

Mr. and Mrs. Johnny R. Roper
Mr. and Mrs. James B. Ross
Mr. and Mrs. George O. Rowe
Ms. Doris Rowley
Ms. Linda Rudd and Mr. Steve P. Hellmuth
Mr. Bobby Rutledge
Saleh Family Foundation
Dr. and Mrs. C. Fagg Sanford
Ms. Marsha Sasser
Ms. Lillian Schilling
Mr. and Mrs. Robert J. Schreiber
Seattle Genetics, Inc.
Sentry Pharmacy
Mr. and Mrs. Paul Shaw
Ms. Marsha Shelton
Ms. Elaine B. Sheppard
Dr. Hope and Mr. John Short
Mr. and Mrs. Alfred E. Shull
Mr. Edward Shuster
Mr. Alvin E. Simek
Ms. Ann L. Skinner
Mr. and Mrs. Jack W. Sledge
Ms. Almarie C. Smith
Mr. Charles Smith
Mr. Denny M. Smith
Mrs. Kari B. Smith
Mr. and Mrs. Lonnie H. Smith
Ms. Patricia L. Smith
Mr. Willie T. Smith
Mr. and Mrs. Harold Smotherman
Mr. and Mrs. John E. Soules, Jr.
Southside Bank
Mr. James H. Sparkman, Jr.
Dr. and Mrs. William T. Sparrow
Ms. P. Renee Stacy, NP
Ms. Joyce E. Stanley
Mr. and Mrs. Charles L. Starks
Mr. and Mrs. Gus Stearns
Ms. Linda Steen
Mrs. Susan Rae Stefanek
Mr. and Mrs. Jay Stenklyft
Mr. and Mrs. Gerald L. Stevens
Dr. and Mrs. Mack D. Stewart
Mr. and Mrs. Roger S. Strain
Ms. Linda Strong
Mr. and Mrs. Robert J. Strong
Stryker Medical
Mr. Dumont D. Sudduth
Mrs. Elizabeth Sutton
Mr. Michael J. Sword
Takeda Pharmaceuticals America, Inc.
Mr. Charles Tapley
Mr. and Mrs. John C. Tate
Mr. Ronald Tate
Mr. Clevin F. Taylor

Foundation Donors 7.01.18 – 6.30.19

Mr. and Mrs. Jerry S. Taylor
 Mr. Alvin D. Temple
 Mrs. Avonne G. Tetrick
 Texas Bank and Trust
 Texas Oncology Tyler
 The CM Group
 The Genecov Group, Inc.
 The R. W. Fair Foundation
 Mr. and Mrs. Don G. Thode
 Ms. Vicki H. Thomas
 Mr. and Mrs. Craig E. Thomasson
 Mr. and Mrs. Bob L. Thompson
 Mr. Loran S. Thompson
 Mrs. Marilyn M. Thompson
 Mrs. Sandra N. Thompson
 Ms. Sharon R. Thorson
 Mr. Kenneth W. Threlkeld
 Mr. and Mrs. Jim Tidwell
 Mr. and Mrs. Harry R. Tosh
 Ms. Annette Trammell
 Trane Ingersoll Rand
 Mr. William B. Travis
 Troup HS Cheerleaders
 Mr. and Mrs. Paul Tugwell
 Mr. and Mrs. Bob Tullis
 Tyler Junior College
 Ms. Shirley Unfred

UT Health North Campus Tyler
 Ms. Patricia B. Vance
 Mr. and Mrs. Ray L. Vaught, Jr.
 VERABANK
 Mr. Robert R. Viana
 Ms. Pamela Wade
 Dr. and Mrs. John F. Walker
 Mr. and Mrs. Johnny Walker
 Mr. Larry Walker
 Mr. Robert E. Walker
 Ms. Susan B. Walker
 Mr. and Mrs. Evern R. Wall
 Mr. and Mrs. H. A. Wall
 Ms. Ann C. Wallace
 Ms. Belinda L. Wallace
 Dr. Ellen S. Walraven
 Mr. and Mrs. Kevin W. Walsh
 Mr. and Mrs. John Wampler
 Ms. Anita J. Warren
 Mr. and Mrs. Charles W. Warren
 Mr. James E. Warren
 Mr. Floyd Watson
 Mr. David M. Weintraub
 Mr. and Mrs. Robert C. Weissmann III
 Ms. Betty B. Welch
 Mr. and Mrs. Robert B. Wells
 Ms. Susie K. Wesley

Dr. and Mrs. Joe E. Whetsell
 Ms. Glenna White
 Mr. Kenneth White
 Whitehouse ISD
 Dr. and Mrs. Clayton E. Whitney
 Mr. and Mrs. Glen E. Wierick
 Ms. Patricia C. Wiley
 Mr. and Mrs. John P. Williams
 Ms. Nancy W. Williams
 Mr. and Mrs. David G. Wilson
 Mr. and Mrs. James A. Wilson
 Mr. Ronald E. Wilson
 Mrs. Janice L. Wisner
 Mr. and Mrs. Rodney E. Wofford
 Mr. Robert M. Wohlfeld
 Mr. and Mrs. Richard H. Wood
 Mrs. Ann S. Woods
 Ms. Mary Turney Woolery
 Mr. Claude Wooley
 Mr. and Mrs. James H. Wright
 Mrs. Linda Yates
 Ms. Patricia E. Young
 Mr. and Mrs. Jerome Zapletal
 Dr. Anne and Mr. Greg Zeorlin
 Ms. Carol Zwan and Mr. Don McClellan





CMNH
HONORS

Thank you for
being a super
CMNH supporter!



CMNH HONORS 7.01.18 - 6.30.19

Caroline and Natalie Adair
Ms. Amanda D. Adair
Wyatt Beltzer
Mr. and Mrs. Richard Baetz
Sunni and Britt Brookshire
Mr. and Mrs. Bruce C. Faulkner
Julie and Tom Brown
Mr. and Mrs. Richard M. Son
Jack Bryans
Mr. and Mrs. J. Chris Glenney
J. D. Burns
Ms. Denise M. Richardson
Rhonda Butler
Dr. Meg Reitmeyer
Ellie and Will Butts
Ms. Elizabeth B. Adams
Mr. and Mrs. Richard B. Patteson
Mr. and Mrs. Ron Thomas
Bailynn and Bentley Byrd
Mr. and Mrs. Danny C. Hollis
Dr. Douglas C. Coltman
Dr. Pochin and Mr. Sheng Yin
Kymber J. De La Cruz
Ms. Marsha Buchheit
Michael W. Deeds, PA-C
Mr. Aubrey D. Ingram
Debbie Dickerson
Ms. Margo H. Adams
Craig Dickerson
Ms. Margo H. Adams
Mrs. Cathy Shipp
Carter W. Dangler
Mr. and Mrs. Chad Dangler
Casey Fisher
Mr. and Mrs. Lee M. Roberts
Mildred H. Grinstead
Mr. and Mrs. Bruce C. Faulkner
Nez and Mike Gross
Mr. and Mrs. Bruce C. Faulkner
The Gully Boys
Dr. and Mrs. Kyle L. Gully
The James H. Herlocker III Family
Mr. David Test
Marlene Hobgood
Mr. and Mrs. Larry Hobgood
Dr. Julia D. Hwang
Mr. and Mrs. Bob Waldrop
Lisa Johnson
Mr. and Mrs. Ben Mosier
Jane McIntire Jordan
Mr. and Mrs. Don E. Carroll

Deborah Keuer
Dr. Steven P. Keuer
Ashlie and Lloyd Kraus
WP & Company
Lucas Taylor Kraus
Mr. Larry Kraus
Dottie Latta
Dr. and Mrs. Paul N. Latta
Brynda Long
Mrs. Jane A. Wilson
Dr. Ming Lu
Mrs. Kristine A. McLaughlin
Karsyn and Paisley McMichael
Mr. Eric Sivertson
Max Mosier
Mr. Joel Mosier
Jan Nelson
Ms. Rebecca J. Nelson
Emily Nichols
Mr. and Mrs. Wes Hightower
Evelyn Nutt
Anonymous
Colt O'Leary
Ms. Karen Finkler
Mrs. Patricia Isenberg
Mr. and Mrs. Brad O'Leary
Mrs. Mary Stewart
Mr. and Mrs. John Wayland
Mr. Robert Wayland
Ms. Brandi N. Wellborn
Lisa Peterson
WP & Company
Adam Phillips, RN
Mrs. Cathy Shipp
Harrison Pope
Mr. and Mrs. Todd Phillips
Adele and John E. Regan
Mr. and Mrs. Bruce C. Faulkner
Nicole and William Robbins
Ms. Margo H. Adams
Riley and Whitman Robbins
Ms. Margo H. Adams
Mr. and Mrs. Robert N. Bergfeld, Sr.
Mr. and Mrs. Robert S. Davis Jr.
Mr. and Mrs. Jerry L. Gouge
Mrs. Lynda R. Harrison
Mrs. Gerry C. Killian
Ms. Deborah Marcontell
Mrs. Rebecca B. Morgan
Mr. and Mrs. Jonathan D. Oland
Mr. and Mrs. Steve Simmons

Mr. and Mrs. Jonathan S. Snyder
Mr. and Mrs. Shane Walters
Ms. Judy H. Woolley
Ms. Karan Wroten
Erin Roberts
Mr. and Mrs. Lee M. Roberts
Sharon, Erin and Lee Roberts
Ms. Ruth C. Fisher
Claire, Callie and Seth Rowan
Mr. and Mrs. Mike Rowan
The Swegarts
Ms. Linda A. Goode
Rebecca Tessier
Mr. and Mrs. Danny R. Potter
Dr. Patrick R. Thomas
Mr. and Mrs. Don L. Arnwine
Lillian Rose and Julia K. Vann
Mr. and Mrs. Joe W. Vann
Cole Wagstaff
Ms. Danielle Nelson
Carly Walker
Mr. and Mrs. Robert E. Walker
Noah Sydney White
Ms. Brenda C. White
Carrie and Sam Wolf
Mr. and Mrs. Bruce C. Faulkner
Sharon and James Wynne
Mr. and Mrs. Bruce C. Faulkner





CMNH
MEMORIALS



Thank you for
being a super
CMNH supporter!

CMNH MEMORIALS

7.01.18 - 6.30.19

- James E. Abell
- Mrs. Deborah A. Mahler
- Charles L. Adams
- Mr. and Mrs. John S. Hamlin
- Charles Wilfred Adams, Sr.
- Ms. Desirree A. Parker
- Mr. and Mrs. Jackie Prather
- Robert Joseph "Bob" Allen
- Mr. and Mrs. Harry B. Whitehurst
- James Arnold
- Mr. and Mrs. Steven C. Dickerson
- Molly E. Beall
- Mr. and Mrs. Steven C. Dickerson
- Buster Branch
- Ms. Sheree Barclay
- Peaches and Bruce G. Brookshire
- Mrs. Kay Cannan
- Dan Brown
- Dr. and Mrs. James O. Claxton
- Nelda Buie
- Mr. and Mrs. Steven C. Dickerson
- Martha M. Burch
- Mr. and Mrs. Steven C. Dickerson
- Bonnie Cunningham
- Mr. and Mrs. Lee S. Portwood
- Conner Curtis
- Mr. and Mrs. Danny D. Curts
- Linda Baird Dickerson
- Mr. and Mrs. Joe C. Eakin III
- Mr. and Mrs. Brian P. Hancock
- Mr. and Mrs. Justin W. Hawthorne
- Ms. Courtney Johnston
- Lee Laster Oil Properties
- Mr. and Mrs. Roy H. Lilly
- Ms. Laura McKethan
- Mr. and Mrs. J. Scott Snyder
- Mr. Michael Sullivan
- Mollie Eltife
- Mr. and Mrs. Bruce C. Faulkner
- Brandi Leigh Farris
- Mr. and Mrs. Richard Farris
- Robert F. Faulkner
- Mr. and Mrs. Bruce C. Faulkner
- Ken and Kenny Findley
- Mr. and Mrs. H. T. Hyde, Jr.
- Fishy
- Mr. and Mrs. Ben Mosier
- Margie L. Fitzgerald
- Mr. and Mrs. Bobby D. Fitzgerald
- Jim and Jamie Flanagan
- Mr. and Mrs. Miles S. Sutton
- Laura Lea Fletcher
- Major and Mrs. Gailon K. Fletcher (Ret)
- Fred M. Garrett
- Mr. and Mrs. Bruce C. Faulkner
- Mickey Haisten
- Ms. Betty Haisten
- Andrew, Dad and Chip Harris
- Ms. Kathryn Harris
- Donnie Heffel
- Mr. and Mrs. Marc K. Ritthaler
- Jason L. Hightower
- Mr. and Mrs. Tony Gilbreath
- Ms. Amy Hightower
- Mr. and Mrs. Don Hightower
- Mr. and Mrs. Horace Ray Lewis
- S. Jenise Hurley
- Mr. and Mrs. Don E. Carroll
- Scott Andrew Kunkel
- Bosworth & Associates
- Bound Tree Medical
- Fitch & Associates
- Genesis PULSE
- Ms. Joan H. Haddox
- Ms. Barbara Kunkel
- Mrs. Candace Kunkel
- Ms. Linda Meiner
- Metro Aviation, Inc.
- Dr. Andre Pennardt and Kimberly Carlberg
- Smith Dental Care
- Mr. and Mrs. John Weber
- West Michigan AirCare
- Ms. Christine Zalar
- Mary Josephine Johnson Lee
- Mr. and Mrs. Lee S. Portwood
- Horace Ray Lewis
- Mr. and Mrs. Don Hightower
- Glenda J. "Nanny" Lloyd
- Mrs. Laura Blackburn
- Mr. and Mrs. Kyle Lee
- Allen C. Locklin
- Mr. and Mrs. Steven C. Dickerson
- Brynda Long
- Mrs. Jane A. Wilson
- Dorsey Adam Love
- Dr. and Mrs. Thomas J. Arnold
- Mr. and Mrs. James R. Blosser
- Ms. Kathleen Cryderman
- Mr. and Mrs. William J. Hardy
- James I. Perkins Family Foundation
- Dr. and Mrs. James D. McAndrew
- Mr. and Mrs. Ron Thomas
- Virginia Ann Lust
- Mr. and Mrs. William C. Lust
- Matthew Kael Maeker
- Mr. and Mrs. Darren Cantrell
- Mrs. Julianne Cole
- Mitzi and David Cook
- Barry, Wendy and Megan Frizzell
- Mr. and Mrs. Sam Kennedy
- Margaret and Tommy Moore
- Morris & Dickson Company Ltd.
- Mr. and Mrs. Bryan Patterson
- Mr. and Mrs. Tony Payne
- Monica and Dennis Scarborough
- Melani and Brad Taylor
- Mr. Jimmy Williams
- Mike McClean
- Al & Peggy Dematteis Family Foundation
- Baby James McClinton
- Cook & Son Roofing
- Ronny McCoy
- Mr. and Mrs. M. Steve Callaway
- Lt. Jack McGuffin
- Mr. Gary W. Frederick

Angela M. Morgan
 Mr. and Mrs. Thomas G. Morgan
 Corine and J. W. Odom
 Mr. Larry Odom
 Pat O'Keefe
 Erin O'Keefe
 Sydney D. Pate
 Mr. Alfred R. Pate, Jr.
 Betty Lou Portwood
 Mr. and Mrs. Lee S. Portwood
 Elvis Raymond
 Ms. Anne Cooper
 Elizabeth Leigh Rowan
 Mrs. Valerie A. Anderson
 Mrs. Peggy Berry
 Mrs. Dawn Franks
 Ms. Mary Elizabeth B. Hahn
 Ms. Deborah J. Jordan
 Ms. Patricia S. Machin
 Mr. and Mrs. David H. Nordyke
 Mr. and Mrs. J. Matt Rowan
 Dr. and Mrs. Mike Rowan, Jr.
 Mrs. Martha Wiggins
 Clara "Marie" Shelby
 Mr. and Mrs. Kyle Lee
 Mr. and Mrs. Tommy L. Pope
 Monty J. Small
 Ms. Mary L. Ward
 David Smith
 Dr. H. Katrina and Mr. Brian J. Duplechain, Jr.
 Jeremiah David Smith
 Mr. Bradley Baker
 Werner Stahl
 Mr. Charles C. Couser
 Dorothy J. Stinson-Curtis
 Mr. and Mrs. Roderick Redwine
 George L. Tarver, Sr.
 Ms. Dorothy B. Tarver
 Carolyn Waters
 Mr. and Mrs. Hal K. Bertram
 Dorothy Lucille "Lucy" Weissmann
 Mr. Timothy Abston
 Ms. Lynne A. Anderson
 Ms. Joye Anestis
 Anonymous

Mr. and Mrs. Max C. Ayer
 Ms. Janice Baskin
 Mr. and Mrs. Mark Beauchamp
 Mr. Tim Bowrey
 Dr. and Mrs. Scott A. Burlison
 Drs. J. Frank Cabell and Lisa A. Kraus
 Ms. Kellie Camelford
 Dr. and Mrs. Bruce C. Carter
 Ms. April Cherry
 Ms. Julie J. Crowley
 Mrs. Amy Crum
 Drs. William D. and Delaine Daniels
 Ms. Cindy Dean
 Ms. Jennifer Drew
 Mr. and Mrs. John K. Dunlap
 Dr. and Mrs. Scott Eckert
 Ms. Susie Fitzgerald
 Mrs. Pat Flanagan
 Mr. and Mrs. Scott F. Fossey
 Ms. Anna Galvis
 Gentry Wild, LLC
 Mr. and Mrs. Dennis M. Greaney
 Ms. Harriet Greaney
 Ms. Molly Guitreau
 Ms. Lianne Hanson Sanchez
 Dr. and Mrs. W. B. Harrell
 Ms. Jordan Haywood
 Ms. Mary Hirsch
 Mrs. Lana Hutchinson
 Ms. Vicki Kallemeyn
 Mr. Ryan Kelly
 Mr. and Mrs. Byron Kinler
 Mrs. Sandra Kirk
 Dr. and Mrs. John A. Larrinaga
 Ms. Renee Litton
 Mrs. Brook McArthur
 Ms. Ariana McClellan
 Mr. and Mrs. Jerry McClure
 The McLachlan Family
 Ms. Ivy McMillin
 Ms. Diana L. Melendez
 Mr. and Mrs. Andrew Mendheim
 Mr. and Mrs. Ralph N. Menetre Jr.
 Mimi and Papa
 Mr. and Mrs. Wayne Morris

Ms. Jenn Northam
 Mr. and Mrs. Don Obert
 Ms. Gwendolin Orr
 Ms. Jill Pierce
 Mr. Jay Pittman
 Ms. Leigh Plaisance
 Ms. Carlotta C. Rhoades
 Rowan Construction Services
 Ms. Julie Sacks
 Ms. Alexis Smith
 Ms. Kayce Smith
 Mr. Lane Staines
 Mr. and Mrs. Michael H. Stephens
 Susanne Elizabeth Jewelry
 Ms. Brooke Swann
 Mr. Herbert Tafolla
 Mr. and Mrs. Alan Tallis
 Ms. Virginia Tanner
 Ms. Lynda M. Tolleson
 Ms. Julie Twilley
 Ms. Carrie Wadlington
 Dr. and Mrs. R. Kent Walker
 Ms. Sarah Watson
 Dr. and Mrs. Eric Weissmann
 Ms. Mary Ann Wernick
 Mrs. Jean West
 Ms. Stacy West
 Ms. Nancy Wilson
 Ms. Geri Winningham
 Morris Welch
 Chris and Stacy Hightower and Family
 Mr. and Mrs. Kyle Lee
 Margret Whitaker
 Mr. James G. Whitaker
 Martha Whitehead
 Mr. and Mrs. Steven C. Dickerson
 John Whitham
 Mrs. Beverly Whitham
 Oliver Clyde Wilbur
 Mr. Roger C. Wilbur
 Saretha Ann Williams
 Mr. and Mrs. Bill Baird
 Royce E. Wisenbaker, Jr.
 Mr. and Mrs. R. K. Wilson III





Thank you for
being a super
CMNH supporter!



CMNH DONORS 7.01.18 - 6.30.19

Mr. and Mrs. Larry Abercrombie
Access to Mobility
Ace Hardware Corporation
Mrs. Ashley B. Adams
Mr. and Mrs. Omer I. Adams
Ms. Betty J. Adkins
Ms. Jameshia Adkins
Mr. Terry Adney
AFLAC
Ms. Angela Albers
Alex and Ani
Mr. and Mrs. Byron L. Allen
Mr. and Mrs. Rob Allen
Altra Federal Credit Union
American State Bank
Ameriprise Certificate Company
Ms. Angela L. Anderson and Mr.
Douglas G. Spiegelberg
Mr. and Mrs. Todd R. Anderson
Dr. and Mrs. Nicholas Andrade
Andrews Distribution Company of
North Texas, LLC
Angels of Care Pediatric Home Health
AnheuserBusch, Inc.
Anonymous
Mr. and Mrs. William M. Appell, Jr.
Mr. and Mrs. Don L. Arnwine
Mr. and Mrs. Fred J. Arrambidez
Ms. Amy Ashwood
At Home Healthcare
Mr. Chad Atchley
Atlas Credit Company
Austin Bank of Texas, NA
Auto Air & Repair
Aveanna Healthcare
Ms. Edelyn F. Badillo
Mr. Roper Bailey
Bailey's Ace Hardware
Ms. Diana S. Baker
Ms. Mary P. Baker
Iza Baldovino
Ms. Cindy Baldrige
Bank of America Employee Giving
Campaign
Mrs. Alisa Barber
Ms. Patti A. Barichello
Mr. and Mrs. Greg Barnett
Dr. Kathryn A. and Mr. Gary V. Barnett
Mr. Larry Barnett, Jr.
Mr. and Mrs. Derek Barnhart
Mr. and Mrs. James W. Barnwell

Barrera Fitness LLC
Mr. and Mrs. Edward Barret
Mr. N. Raymond Batchelor
Mr. and Mrs. Terry G. Bates
Mr. and Mrs. Paul Bauereis
Mr. and Mrs. Chuck Bauman
Mr. and Mrs. William Beasing
Dr. and Mrs. Timothy L. Beck
Mr. and Mrs. Billy J. Beckworth
Ms. Kristen E. Beddingfield
Mr. and Mrs. Alton Bell
Ben Franklin Plumbing
Mrs. Brenda Benedict
Ms. Darla K. Bennett
Mrs. Beverly J. Beranek
Bernard Foundation
Mrs. Celeste Berry
Ms. Paige C. Betts
Mr. and Mrs. John Bill
Ms. Patricia Billups
Mr. and Mrs. Ali R. Birjandi
Ms. Kamie L. Bishop
Ms. Stephanie Bishop
Ms. Janie L. Black
Miss Emily N. Blackmon
Mr. and Mrs. Thomas D. Blair
Ms. Virginia P. Blalock
Ms. Codie L. Blaser
Mr. Marvin D. Boatright
Mr. Bret Bochsler
Mr. Keenan L. Boehme
Ms. Cindy B. Boles
Ms. Hazel Boone
Ms. Carol Boothe
Mr. and Mrs. Michael J. Bosworth
Mrs. Diane C. Bottoms
Mr. and Mrs. James H. Bowers
Mr. and Mrs. Dennis E. Box
Ms. Melissa D. Bradford
Mr. and Mrs. Lindsey Bradley
Ms. Skyla Bradley
Ms. Gleda M. Brady
Mr. Gaylan Braselton
Mrs. Gillian O. Brasfield
Mr. and Mrs. Thomas E. Brazier
Ms. Ada Brazo
Mrs. Sonja L. Brewer
Ms. Susan M. Brewer
Brick Street Pharmacy
Mr. George M. Bridges
Ms. Rebecca Brignac

Ms. Sharon L. Brooks
Brookshire Grocery Company
Brown Bauman & Smith, P.C.
Ms. Casey R. Brown
Mr. and Mrs. DeWayne Brown
Mr. John Brown
Ms. Rose K. Brown
Mr. and Mrs. Thomas J. Brown
Miss Crystal Browning
Ms. Elisabeth Buchanan
Mr. and Mrs. J. Roe Buckley
Ms. Shannon Buell
Ms. Rebecca Buenaventura
Mrs. Kay Bullard
Mr. Ross Burch
Ms. Christie M. Burge
Mr. Brian Burgess
Ms. Cathy G. Burnett
Mr. and Mrs. Steve Burnham
Ms. Donna M. Burnley
Ms. Amanda L. Burrell
Mr. and Mrs. Kris Buth
Ms. Kimberly J. Butler
Mr. and Mrs. John L. Button
Mr. and Mrs. Reagan L. Butts
Ms. Linda S. Bynum
Dr. and Mrs. Marcus Byrd
Mr. Robert M. Byrd
C & C Wood Works
C & M Building Supply
Dr. and Mrs. James A. Caccitolo
Mrs. Roxanne J. Caccitolo
Cagle Auto Group
Ms. Mary Nell Cagle
Ms. Amber N. Cain
Mr. Jerry L. Calender
Mr. and Mrs. Ramon Camacho
Mrs. Eleanor Cameron
Mr. and Mrs. Leon Cameron
Ms. Julian G. Campos
Mrs. Pat Camron
Mrs. Lauren N. Canady
Mr. Jason Canchola
Cardiovascular Associates of East
Texas PA
Mr. Cory Carifee
Ms. Kamie Carnegie
Reverend and Mrs. John P. Carr
Mr. Daniel Carrell
Mr. and Mrs. Don E. Carroll
Dr. and Mrs. Billy Dan Carson

Mr. and Mrs. Charles R. Carswell
Carter BloodCare
Mr. Joseph B. Carter
Mr. Stephen W. Cary
Ms. Cherry L. Castaneda
CEFCO Convenience Stores
Ms. Gale Chalk
Mr. and Mrs. John J. Champion
Mr. and Mrs. Chris Chandler
Ms. Crissy R. Chanslor
Ms. Amber N. Chauncey
Mr. and Mrs. David Chenault
Cheryl's Lake Country Florist
Chico's FAS, Inc.
Children's Miracle Network Hospitals
Mr. and Mrs. Randall V. Childress
Chipotle
Mrs. Demetria Chivers
Ms. Cynthia L. Christopher
CHRISTUS Health
CHRISTUS Trinity Mother Frances
Health System
CHRISTUS Trinity Mother Frances
Health System Volunteers
Ms. Dorothy L. Clark
Ms. Haley L. Clark
Ms. Lauren K. Clark
Miss Lexie Clark
Dr. and Mrs. James O. Claxton
Ms. Nina Clay
Mrs. Amy L. Clevenger
Ms. Pam J. Clifton
Ms. Patricia L. Cline
Ms. Lisa M. Cloud
CocaCola
Mr. Peter J. Coladipietro
Cole & Co.
Mr. and Mrs. Colby Collier
Ms. Amy Beth Collins
Ms. Jennifer K. Collins
Ms. Samantha B. Comeaux
Mr. and Mrs. Michael J. Connolly
Ms. Kameshia L. Cook
Mrs. Lita Cook
Ms. Patricia R. Cook
Pat Cooke
Mr. and Mrs. Patrick A. Cooper
Cooperative Teachers Credit Union
Ms. Kathy M. Cope
Ms. Ruby Cornelio
Mr. and Mrs. M. L. Cornett

Mr. Andrew L. Cornish
Ms. Marilyn K. Cotton
Mr. Charles C. Couser
Cozad Insurance Group
Ms. Brenda Craig
Col. and Mrs. Emery J. Crane (Ret)
Mr. and Mrs. Edwin Crank
Ms. Michelle Craze
Mr. Shawn M. Cross
Ms. Yvonne L. Crumpton
Mr. and Mrs. Manuel Cruz
Ms. Tina E. Crymes
Mr. Darrell Crynes
Ms. Kayla Culpepper
Mrs. Emma H. Curtis
Dairy Queen
Dakotas
Ms. Carleen Dark
Ms. Beverly A. Davis
Ms. Meoshi P. Davis
Ms. Penny B. Davis
Mr. and Mrs. Richard C. Davis
Mr. and Mrs. Robert S. Davis Jr.
Mr. and Mrs. Ron Davis
Mr. and Mrs. Toby G. Davis
Mr. and Mrs. Tom Davis
Mr. William H. Davis
Mr. and Mrs. Wilmon Davis
Mr. and Mrs. Thomas C. Deal
Mr. and Mrs. Mike Deer
Deer's Exterminating Service LLC
Ms. Christina Deimund
Delta Air Lines, Inc.
Mr. and Mrs. Darrell W. Dement
Mr. and Mrs. Jeff Denson
Mr. and Mrs. Joe Denson
Mr. and Mrs. John H. Depoe
Mr. and Mrs. Todd DeRoo
Ms. Claudia L. Diaz
Diboll Ace Hardware
Mr. and Mrs. Steven C. Dickerson
Ms. Angela R. Dickey
Mrs. Rachel M. Dillion
Dimensions Central Marble, Inc.
Ms. Casey Dirksen
Ms. Leah C. Dixon
Doches Credit Union
Ms. Meredith M. Dodson
Dr. and Mrs. Ronald F. Dodson
Ms. Theresa Dorough
Ms. Annie S. Dotson
Double B Express, LLC
Mr. and Mrs. Stephen R. Drake
Mr. William T. Drozd
DSM Canister, LLC
Ms. Donna Dugger
Mr. and Mrs. Billy M. Dunklin
Ms. Jamie Dunn
Ms. Tiffany Dupont
Mr. and Mrs. S. Ray Durham
East Texas Communities Foundation,
Inc.
Ms. Melva Z. Edwards
Ms. Rhonda S. Efurd
Mr. Walter C. Ellis
The Honorable and Mrs. Kevin P. Eltife
Epic
Ms. Katy E. Ereman
Mr. and Mrs. Erik A. Eriksen
Ms. Erika N. Espinosa
Ms. Kayla A. Essex
Mr. and Mrs. Charles O. Etheridge
Ms. Alicia G. Eubanks
Mr. and Mrs. Jared L. Evans
Exploration Insurance Group, LLC
Express Employment Professionals
Extra Life
Fairfield ISD
Mr. and Mrs. Mace Farmer
Mrs. Vicky Farmer
Mr. Phillip H. Farrington
Ms. Sharon M. Farrington
Mr. and Mrs. Bruce C. Faulkner
Ms. Samantha A. Fay
Ms. Kimla Ferguson
Mr. and Mrs. B. R. Fields, Jr.
Ms. Stephanie Finch
Mr. and Mrs. Bobby D. Fitzgerald
Five Star Nutrition
Mr. and Mrs. Matthew Flanery
Mr. Jesus Flores
Ms. Vanessa M. Foreman
Mr. and Mrs. Michael D. Forsythe
Mr. and Mrs. Scott F. Fossey
Dr. and Mrs. Roger N. Fowler
Ms. Allison L. Frahn
Miss Beverly G. Francis
Ms. Deborah A. Franklin
Mrs. Sherry D. Franklin
Ms. Cindy Frausto
Ms. Jennifer A. Freeman
Mrs. Tammy Freeman
Mr. and Mrs. Dennis W. Frey
Ms. Ashleigh Y. Fuller
Mr. and Mrs. Wilford V. Gabbard
Ms. Iris Y. Gamble
GameStop
Mr. and Mrs. Leonardo Garcia
Mr. and Mrs. Jerry Gaskill
Mr. and Mrs. John T. Gaston
Mr. and Mrs. Dean C. Gatlin
GBB Hospitality Group, LLC
General Mills
Mr. and Mrs. Zola L. George
Mr. and Mrs. Doug Gholson
Ms. Kimberly L. Gibson
Mr. Tommy Gilbreath
Mr. and Mrs. Tony Gilbreath
Mr. and Mrs. Terry Giles
Mrs. Samantha A. Gilleland
Mr. Jeremy Gillespie
Mr. and Mrs. Russell Gilpin
Miss Mary E. Glenn
Mr. and Mrs. J. Christopher Glenney
Ms. Edie L. Gobert
Ms. Angie Goedeke
Gold 'N Visions, LTD
Ms. Linda B. Gonzalez
Ms. Brittany A. Goolsbee
Mr. and Mrs. Rick Gordon
Mr. Thomas M. Gordon, Jr.
Mrs. A. Leah Gorman
Ms. Amy L. Grant
Ms. Cheryl L. Gray
Ms. Renee Gray, NNPC and Mr. John Murphy
Ms. Ashley L. Green
Ms. Marjorie L. Green
Ms. Olyvia Green
Ms. Laura R. Greenlee
Ms. Jennifer S. Griggs
Mrs. Shirley H. Guillory
Fred and Ginger Haberle Charitable
Fund at East Texas Communities
Foundation
Ms. Jennifer Haley
Ms. Brooklyn Hall
Hall Buick GMC
Ms. Joyce B. Hames
Mr. and Mrs. Glen T. Hamilton
Mr. and Mrs. Howard Hamilton
Mr. and Mrs. Raymond D. Hamilton
Ms. Suzanne G. Hamm
Ms. Hazel Hampton
Mr. and Mrs. Scott Hand
Mr. Jeremy L. Haning
Ms. Stephanie T. Hankins
Ms. Patricia A. Hanna
Hardin Ace Hardware
Ms. Sharon Hardy
Ms. Mary B. Harp
Ms. Melissa E. Harper
Dr. and Mrs. W. B. Harrell
Mr. and Mrs. Al Harris, Jr.
Ms. Monica Harris
Mr. Terry Harris
Mrs. Claudia J. Hartley
Ms. Brandi L. Hassell
Mr. Vernon Havis
Mrs. Bethany L. Hawkins
Msgt. Robert J. Hawkins (Ret)
Mr. Jacob Hays
Ms. Tara Hays
Mr. Dustin Head
Ms. Shirley P. Head
Ms. Evonne D. Healy
Ms. Karyn K. Heath
Ms. Barbara Heldman
Mrs. Teri Heller
Mr. Steve P. Hellmuth and Ms. Linda
Rudd
Mrs. Gwendolyn P. Helmer
Henry & Peters, P.C.
Ms. Onita Henson
Ms. Shelly Henson
Mr. J. H. Herlocker III
Ms. Cinthia E. Hernandez
Mr. and Mrs. James Hernholm
Ms. Edna M. Hester
HGR General Contractors L.P.
Mr. and Mrs. Billy E. Hibbs, Jr.
Ms. Jan Hicks
Ms. Sheila Higginbotham
Mr. and Mrs. Chris Hightower
Ms. Mildred B. Hill
Ms. Susan Hill
Ms. Hollie M. Hilliard
Mrs. Margaret Z. Hilliard
Mr. and Mrs. Michael G. Hines
Mr. Benjamin Hitt
Ms. Rebecca M. Hockett
Mr. Bryan Hodges
Mr. and Mrs. Louis S. Holden
Mr. George T. Holland
Ms. Shirley Holland
Mr. Lonzell Holman
Ms. Yong Holton
Mr. Thomas L. Holyfield
Mrs. Kamyn Honzell
Mrs. Martha B. Hook
Mr. and Mrs. V. Ed Hooten
Mrs. Barbara W. Horton
Drs. Samuel and Edna Houston
Ms. Robyn Howell
Mr. and Mrs. Lloyd F. Howerton
Mrs. Barbara J. Hubbard
Ms. Charlene Hubbard
Mr. and Mrs. Timothy M. Hubbard
Ms. Margaret D. Hudson
Ms. Sandra L. Huffman
Mr. and Mrs. Clifton E. Hughes, Jr.
Ms. Tykitta Hunter
Ms. Alisa R. Hutchins
Miss Jamie L. Hutchins
Mr. and Mrs. James W. Hutchins
Ms. Manuela I. Ibarra
Imagine Nation Books, LTD. DBA
Books are Fun
Infinity Health Solutions
Ms. Shirley J. Inselman
Ms. Theresa Irons
Mr. James Iverson
Mrs. Holly B. Izard
J & K Storage, Ltd
Mr. and Mrs. Alan R. Jackson
Mr. and Mrs. Benjamin S. Jackson
Mr. Jack A. Jackson
JAMCAT Sound & Reception
Mr. Jonathan Jetter
Mr. and Mrs. Boyce A. Johnson
Ms. Jamie Johnson
Ms. Linda L. Johnson
Ms. Melba Johnson
Mr. and Mrs. Jeffrey Jon
Ms. Jaqueline J. Jones
Mrs. Jennifer K. Jones
Mr. John E. Jones
Reverend and Mrs. L. A. Jones
Ms. Sheila A. Jones
Ms. Stephanie L. Jones
Mr. and Mrs. Steven Jones
Ms. Suzanne W. Jones
Ms. Teressa A. Jones
Ms. Shelly D. Jones Logan
Mrs. Janis K. Jordan
Mr. Larry G. Jordan
Ms. Vickie Joslin
Ms. Gina C. Juarez
Ms. Sadie A. Jumper
Kathyleen L. Walden Living Trust
Mr. James E. Kear
Ms. Kathy Keeling
KeepIt Mini Storage
Ms. Charla Kelley
Kelly Community Federal Credit Union
Ms. Darla D. Kemp
Mrs. Neta Kemp
Kendra Scott
Ms. Burnell Kennedy

Ms. Donna T. Kennedy
 Ms. Mari C. Kennedy
 Mr. and Mrs. Chris Kent
 Dr. Jennifer M. and Mr. Jarad Kent
 Ms. J. Marie Kerry
 Dr. and Mrs. Steven P. Keuer
 Ms. Linda Kingsbury
 Ms. Mariam Kirby
 Ms. Delores C. Kirkpatrick
 Kiwanis Club Community Service
 Kiwanis Club of Holly Lake
 Mr. and Mrs. Ben F. Koonce
 Korzeniewski Family Foundation
 Kimberley Krauter
 Mr. and Mrs. Phillip A. Kuchinsky
 La Invasora KOYE 96.7
 Ms. Glenna L. Lackey
 Ms. Wendy M. LaFaitt
 Lakeport Ace Hardware
 Ms. Sheri A. Lamonte
 Mr. and Mrs. Chris Langford
 Ms. Alyssa A. Laurich
 Ms. Evelyn M. Law
 Mr. and Mrs. Trey Lawson
 Mrs. Gail Lawton
 Ms. Charlsye J. Lee
 Ms. Erica Lee
 Mr. and Mrs. Joseph E. Legenza
 Ms. Christine M. Legler
 Mr. and Mrs. Bill Leisch
 Ms. Tara T. Lemmel
 Christol Leon
 Ms. Mollie Leonard
 LeTourneau Federal Credit Union
 Dr. and Mrs. Michael R. Lewis, Jr.
 Mr. and Mrs. Roy H. Lilly
 Mrs. Sarah Lindemann
 Mr. and Mrs. Stephen J. Lockhart
 Ms. Angela Logan
 Mrs. Britni S. Long
 Mr. and Mrs. Mack Long
 Mr. Brian A. Longmire
 Mr. and Mrs. Frank Lookadoo
 Love's Travel Stop & Country Store
 Mrs. Yvonne K. Loving
 Dr. Ming Lu and Dr. Chongyi Shen
 Ms. Delores Lueders
 Mr. and Mrs. William C. Lust
 Mr. Darryl F. Madlock
 Ms. Virginia D. MaGuire
 Mrs. Patricia Maher
 Malcolm Reed Ventures LP
 Mr. and Mrs. James L. Mallory
 Mr. Ben Y. March
 Mr. and Mrs. Robert Marchell
 Mrs. Consuelo M. Martinez
 Mr. and Mrs. Jason A. Markham
 Ms. Marisela Marquez
 Ms. Brandi S. Marsh
 Ms. Angela F. Marson
 Stacy and Reid Martin Family
 Charitable Fund at East Texas
 Communities Foundation
 Mrs. Heather L. Martinez
 Ms. Ivonne A. Martinez
 Mrs. Stephanie C. Martinez

Mrs. Suzie Mason
 Ms. Geneva Massingill
 Ms. Ashley P. Mathews
 Mr. and Mrs. Carl L. Matthews
 Ms. Virginia W. Mattox
 Andre Maudin
 Mr. and Mrs. James J. Mazzu
 Ms. Ronda D. McBride
 Mr. and Mrs. Brian K. McCabe
 Ms. Lisa McCabe
 Mr. and Mrs. C. Clay McCain
 Mr. and Mrs. James T. McCain III
 Ms. Virginia R. McCalla
 Mr. and Mrs. H. Wayne McCarley
 Mr. and Mrs. Willie L. McCloud
 Ms. C. Cleary McComic
 Mrs. Susan McGuire
 Ms. Ashley W. McIntyre
 Mr. and Mrs. Thomas W. McKay
 Ms. Jessica McLean
 Mr. Bobby McMillian
 Mr. and Mrs. John E. Means
 Medical Plaza Pharmacy
 Mr. Alex Medina
 Ms. Diane Medlin
 Mr. Joseph A. Mele
 Mr. and Mrs. Isidro L. Mendoza
 Metroflex Gym
 Ms. Berenda A. Mewborn
 Michael T. Brown, PHD, PLLC
 Ms. Sandra Migl
 Dr. and Mrs. William Milawski
 Mr. and Mrs. Bobby Miller
 Ms. Connie L. Miller
 Ms. Jodi Miller
 Mr. Keith Miller
 Mr. and Mrs. Kevin H. Miller
 Ms. Rachael A. Miller
 MillerCoors
 Mineola Ace Hardware
 Mineola Community Bank
 Mineola Kiwanis Club
 Mr. Melburn E. Minter
 Mr. and Mrs. Richard Minyard
 Mr. and Mrs. Dan Mischnick
 Miss America Organization
 Mr. and Mrs. Paul M. Misso
 Mrs. Aulbry L. Mitchell
 Mr. Justin Mitchell
 Ms. Sheree A. Mize
 Mr. John E. Mobley
 Modus Resources
 Ms. Eva Mollinedo
 Mr. William M. Moman
 Mr. Billy L. Montgomery
 Montgomery Xpress Chiropractic, PLLC
 Mr. and Mrs. Hiram Moon
 Ms. Phyliss Moore
 Mr. Jonas Morales
 Mr. and Mrs. Ted Morawski
 Ms. Cheryl B. Morgan
 Ms. Pharris Morgan
 Dr. Brenda and Mr. Jim Morris
 Ms. Lacey M. Morris, NNPC
 Mr. and Mrs. Michael P. Morrison
 Ms. Linda W. Moseley

Mr. and Mrs. Ben Mosier
 Ms. Shelly L. Mosley
 Ms. Mitzi L. Moss
 Ms. Sarah Mottu
 Mr. and Mrs. Duane L. Moushon
 Mt. Sylvan Baptist Church
 Mr. and Mrs. Dana M. Mueller
 Ms. Chelsea C. Munoz
 Ms. Elizabeth Munoz
 Mr. and Mrs. Simon Munoz
 Ms. Dorothy Murry
 Mr. and Mrs. Craig Musgraves
 Mr. and Mrs. Johnson N. Mwangi
 Mr. and Mrs. Steven Myrick
 Mr. and Mrs. Todd B. Nash
 Dr. and Mrs. Fadi Nasrallah
 National Revival Center
 Ms. Juli Neace
 Mr. and Mrs. Bryan Neal
 Mr. and Mrs. Jimmy P. Neal, Jr.
 Mr. and Mrs. Randy Neal
 Mr. and Mrs. Jack J. Neely
 Mr. and Mrs. David P. Neidlinger
 Ms. Laura Nelson
 Network for Good
 Mr. and Mrs. Brad Newberry
 NFITMOUS, LLC
 Ms. Hoa Nguyen
 Ms. Kirsten A. Nickel
 Noonday Hardware & Auto Parts
 Ms. Debbie A. Nunley
 Mrs. Carmen M. Nunn
 Mr. and Mrs. Michael O'Brien
 Ms. Amarina E. O'Byrne
 Mr. and Mrs. T. Michael Ogg Sr.
 Mr. and Mrs. Bobby Oldham
 Mr. and Mrs. Brad O'Leary
 Ms. Cheryl Olive
 Mr. and Mrs. Michael T. O'Neill
 OrangeTheory Fitness
 Dr. and Mrs. David C. Osteen
 Ms. Juanita E. Oviedo
 Mr. and Mrs. Jeffrey O. Owen
 Ms. Amber M. Owens
 Ms. Sonia Z. Palacios
 Panda Restaurant Group, Inc.
 Ms. Chelsey L. Paris
 Mr. and Mrs. Jeff Parker
 Ms. Tiffany Parker
 Dr. Priyal Patel
 Ms. Tisha M. Patterson
 Mr. and Mrs. Kyle Payne
 PeekABootique
 Pelican Point Lake Fork
 Ms. Mary L. Pendleton
 Mr. and Mrs. Gary Penkilo
 Ms. Amelda Penn
 Mr. and Mrs. Jose L. Perez
 Ms. Kimberly P. Perkins
 Ms. Kathleen P. Perrin
 Ms. Karen Perry
 Ms. Amy Person
 Mr. and Mrs. Robert R. Pettit
 Ms. Linda M. Phillips
 Ms. Margie Phillips
 Mr. and Mrs. Todd Phillips

Ms. Dollie M. Pierce
 Mr. and Mrs. Matthew D. Pierce
 Mr. Gordon Pittman
 Ms. Becky L. Plude
 Mr. and Mrs. Larry E. Pollard
 Mrs. Lisa A. Polomsky
 Mr. and Mrs. Colin Pope
 Poseidon Power Washing LLC
 Mr. and Mrs. Michael R. Powell
 Mr. and Mrs. Johnny M. Powers
 Ms. Kandice Prater
 Mr. Bryan Preston
 Mr. Paul E. Price
 Ms. Becky Pricer
 Mr. and Mrs. Scot C. Pridgen
 Mr. and Mrs. Jason J. Proctor
 Prothro, Wilhelmi & Company CPAs
 Mr. and Mrs. Bill Pulliam
 Dr. Nancy L. Pusser and Mr. Timothy
 C. Sherwood
 QuarterVend, LLC
 Ms. Teresita C. Quibrall
 Ms. Penny Quinn
 R & K Distributors, Inc.
 R. M. Allen Family Partners, LLC
 Dr. and Mrs. Mark C. Race
 Ms. Gena L. Ragland
 Mr. and Mrs. R. Tayloe Ragland
 Ms. Sara L. Raibourn
 Mr. and Mrs. Terrance M. Ramm
 Mr. and Mrs. Chad Ramsey
 Mr. and Mrs. Steven Ramsey
 Mr. and Mrs. Matthew Ranshaw
 Mr. and Mrs. James W. Rapp
 Ms. Karen Rasco
 Ms. Christen E. Rashidi
 Ms. Ally Rayzor
 RE/MAX First Choice
 RE/MAX Integrity
 Ms. Jacqueline L. Read
 Mr. and Mrs. Royce Read
 Red Bull
 Mr. and Mrs. John D. Redfern
 Mr. and Mrs. Richard R. Redman
 Ms. Blanca A. Reed
 Ms. Wendy Reed
 Mr. and Mrs. John W. Reedy
 Ms. Karen Rehders
 Mr. and Mrs. Wendell J. Rehm
 Mr. Brandon Reinertsen
 Reliance Benefits, Inc.
 Mr. K. Leon Renfroe
 Mr. and Mrs. Randy Reynolds
 Ms. Tracey L. Reynolds
 Mr. and Mrs. Don H. Rhodes
 Ms. Denise M. Richardson
 Mr. and Mrs. J. D. Richardson, Jr.
 Mrs. Polly F. Richardson
 Mr. and Mrs. William P. Richardson
 Ms. Stephanie J. Riley
 Mr. and Mrs. J. Reed Rippy
 Mr. and Mrs. William C. Robbins
 Roberts & Roberts Law Firm
 Mr. and Mrs. Dick Roberts
 Mr. and Mrs. Blake Robertson
 Ms. Bridget Robertson

Ms. Lisa R. Robinson
 Mr. and Mrs. Ray Robinson
 Ms. Estrella Robledo
 Mr. Daniel L. Rodell
 Dr. and Mrs. James R. Rogers
 Ms. Kara D. Rogers
 Ms. Claudia Rojas
 Ms. Mary S. Rollins
 Mr. and Mrs. Steve Roosth
 Ms. Susana Rosen
 Ms. Courtney A. Rosenstein
 Ms. Courtney M. Ross
 Mrs. Freda D. Ross
 Ms. Mia T. Ross
 Mr. and Mrs. J. Matt Rowan
 Mr. and Mrs. Jon Rowan
 Mr. and Mrs. Mike Rowan
 Ms. Terri K. Rowden
 Mr. Gary A. Rowe
 RSquare Security Services, LLC
 Rayna S. Rudasill
 Ms. Corinna Ruiz
 Ms. Pamela C. Rushing
 Ms. Lynn Russell
 Mr. Melvin E. Ruyle
 Dr. and Mrs. James F. Ryder
 Mr. and Mrs. William D. Saban
 Mr. and Mrs. Rick E. Sage
 Saleh Family Foundation
 Ms. Meli A. Sanchez
 Mrs. Krystal L. Sanders
 Rikki Sandvik
 Mr. and Mrs. Doug Sapp
 Mr. and Mrs. E. L. Sartain
 Ms. Crystal Sawyer
 Ms. Laura L. Schneider
 Mr. Ronnie J. Schomerus
 Dr. and Mrs. Gregory A. Schultz
 Dr. and Mrs. Hans Schuricht
 Mr. C. N. Schwab
 Ms. Michelle C. Scott
 Scott's RV Service
 Security's Lending Hand Foundation
 SGD Holdings, LLC
 Mr. and Mrs. Del M. Shankle
 Ms. Rachelle L. Sharpe
 Ms. Sylvia R. Shaver
 Mr. and Mrs. R. Walton Shelton
 Ms. Elaine B. Sheppard
 Ms. Teresa M. Shick
 Mr. James Shock
 Ms. Tamishea Showmake
 Sigma Alpha Epsilon Texas Zeta Chapter
 Ms. Barakha Y. Silvia
 Mr. and Mrs. Steve Sims
 Mr. Ronald G. Singley
 Mr. and Mrs. Dan Skinner
 Mr. James D. Skinner
 Mr. and Mrs. Matthew D. Skinner
 Slayton Construction LLC
 Mr. and Mrs. Jack W. Sledge
 Mr. Gabe Sly
 Smile.Amazon.com
 Mr. Alfred Smith
 Ms. Almarie C. Smith

Mr. Charles Smith
 Dr. and Mrs. H. D. Smith
 Mr. James C. Smith
 Ms. Janice C. Smith
 Mrs. Kimberly M. Smith
 Ms. Lori E. Smith
 Mrs. Melissa Smith
 Mr. and Mrs. Michael J. Smith
 Dr. and Mrs. Roy R. Smith
 Mr. Sam Smith
 Dr. and Mrs. Scott Smith
 Ms. Suzie Smith
 Mr. and Mrs. Richard M. Son
 Sons of the American Legion Squadron 12
 Mr. and Mrs. Charles L. Sorrells
 Southern Glazer's Wine and Spirits Charitable Fund
 Southside Bank
 Southwestern Cleaning Service
 Mr. and Mrs. David R. Spears
 Mr. James E. Speier, Jr. and Ms. Joann Boyd
 Mr. and Mrs. Christopher S. Spence
 Mrs. Elizabeth M. Spence
 Mr. and Mrs. Jerry J. Spencer
 Mr. and Mrs. Steve M. Spitzer
 Ms. Ashley Springs
 Ms. Julie E. Stafford
 Ms. Joyce E. Stanley
 Mr. and Mrs. Monty Stanley
 Dr. and Mrs. Charles L. Starks
 Dr. Amy and Mr. Kelly Starr
 Steamatic of East Texas, Inc.
 Mr. Leon Steele
 Ms. Andrea Stegman
 Stephen F. Austin State University
 Dr. Marvin G. J. Stephens, Jr.
 Mrs. Penny Stephens
 Ms. Brenna J. Stidham
 Ms. Jacqueline A. Stiernagle
 Mrs. Jane Stiles
 Mr. and Mrs. Michael T. Stiles
 Mr. and Mrs. Ernest R. Stokes
 Mrs. Robin S. Stokes
 Mr. and Mrs. Richard L. Stone, Jr.
 Mr. and Mrs. James C. Stout
 Ms. Mildred L. Stratton
 Ms. Penny L. Strong
 Mr. and Mrs. Robert J. Strong
 Ms. Carolyn S. Stroud
 Ms. Kathleen C. Studer
 Mr. and Mrs. Tommy T. Sukiennik
 Mrs. Donna Sullivan
 Mr. Calvin Sumner
 Mrs. Terri D. Sumpster
 Mrs. Elizabeth Sutton
 Ms. Samantha Swain
 Ms. Monica N. Swanson
 Mr. Dusty Swoape
 Ms. R. Renee Tannery
 Mrs. Mary Anne L. Tarrant
 Ms. Holli Tate
 Mr. Jon Tate
 Ms. Angela Tavaréz
 Ms. Mariah I. Taylor
 Mrs. Melissa G. Taylor

Mrs. Shelly Taylor
 Dr. Tiffany and Mr. Chad Taylor
 Ms. Tracy Taylor
 Ms. Wanda Jo Taylor
 Mr. Malcolm Teasdale
 Mr. and Mrs. Matt Tefteller
 Telco Plus Credit Union
 Ms. Sandra I. Terrazas
 Texas Oncology, P.A.
 The Louis & Peaches Owen Family Foundation
 The Saxton Group
 The University of Texas at Tyler
 Ms. Kelsey Thomas
 Mr. and Mrs. R. Marshall Thomas
 Ms. Rylea E. Thomas
 Mr. and Mrs. Bob L. Thompson
 Mrs. Marilyn M. Thompson
 Mr. and Mrs. Robert Thompson
 Mrs. Sherry Thorn
 Thrive SPC
 Mr. and Mrs. Joe Tincher
 Mr. Bryan Tippitt
 Ms. Pat Tippitt
 TISD Culinary Arts Chili Cook Off
 Mr. and Mrs. Jeremy Titsworth
 Mr. and Mrs. Pete Tjoelker
 Ms. Annett Tokarczyk
 Dr. and Mrs. J. D. Toney
 Mr. and Mrs. Jackie L. Toon
 Tower Top Solutions
 Mr. and Mrs. Marshall C. Treadwell
 Mr. and Mrs. Michael A. Tresca
 Trinity Valley Pools
 Mr. and Mrs. Herbert R. True
 TRUGREEN Foundation
 Mr. and Mrs. David Turner
 Ms. Janet Turner
 Ms. Mishea Turner
 Tyler Golf Carts, Inc.
 Ms. Gwendolyn S. Tyler
 Ms. Mary Tyler
 Tyler Roofing Company
 Mrs. Amanda J. Uncapher
 United Credit Union
 United Heritage Credit Union
 United Networks of America
 United Way of Tyler/Smith County
 US Connect
 Miss Alixandria G. Valdez
 Valvoline Instant Oil Change
 Mr. Juan P. Vanegas
 Mr. and Mrs. Joe W. Vann
 Ms. Dawn Veach
 Ms. A. Nichole Veretto
 Mr. and Mrs. Andrew von Eschenbach
 Ms. Haylee R. Voyles
 Mrs. Jessica L. Waites
 Mr. and Mrs. Kenneth S. Waits
 Walgreens
 Mrs. Wendy Walker
 Ms. Belinda L. Wallace
 Ms. Shonda Wallace
 Walmart
 Mr. and Mrs. Kevin W. Walsh
 Mr. and Mrs. Jason Walters

Mr. and Mrs. John Wampler
 Ms. Lindsay E. Wampler
 Cecil and Bernie Ward Family Donor Advised Fund at East Texas Communities Foundation
 Mr. and Mrs. Charles W. Warren
 Mr. and Mrs. Don P. Warren
 Mr. James E. Warren
 Ms. Bethlatee R. Washington
 Mrs. Nora L. Washington
 Mrs. Jana L. Watkins
 Ms. Julia Watkins
 Ms. Shelia C. Watson
 Ms. Tambra Watson
 Ms. Kelli D. Waymire
 Mr. Jeremy Weakley
 Ms. Doris Weber
 Ms. Rosaleen Weiss
 Dr. and Mrs. Eric Weissmann
 Mr. and Mrs. Robert C. Weissmann III
 Mr. and Mrs. A. Shane Welch
 Mr. and Mrs. Stephen O. Welch
 Welling Enterprises, Inc.
 Ms. Kathy Welsh
 Mr. Josh Westbrook
 Mr. and Mrs. Monty L. Whetstone
 Mrs. Gloria G. White
 Mr. and Mrs. John B. White
 Mr. and Mrs. John R. Whitfield
 Mrs. Anna Whitley
 Mr. Jim R. Whitt
 Ms. Shirley Whitwell
 Mr. and Mrs. Terry D. Widdows
 Mr. and Mrs. Gary Wideman
 Ms. Arlene T. Wieboldt
 Mr. and Mrs. John P. Williams
 Mr. and Mrs. Todd C. Williams
 Ms. Chloe Wilson
 Ms. Donna Wilson
 Ms. Jaclyn D. Wilson
 Mrs. Jane A. Wilson
 Ms. Patricia Wilson
 Mr. and Mrs. Walter R. Wilson
 Ms. Lenita C. Wolf
 Wood County Electric Cooperative
 Wood County Farm Bureau Mineola
 Ms. Teresa L. Wood
 Mrs. Vickie S. Wood
 Ms. Leslie M. Wooden
 Ms. Christen Woods
 Ms. Priscilla Woods
 Mrs. Patricia A. Woolard
 Ms. Mary Turney Woolery
 Ms. Hailee D. Wooten
 Ms. Keslie Wortham
 Mr. Benjamin Wright
 Mrs. Lynn Wyllie
 Ms. Suzanne L. Yates
 Ms. Laura Yeley
 Ms. Katie York
 Mr. and Mrs. Glenn Young
 Mr. and Mrs. Michael C. Young
 Ms. Patricia E. Young
 Ms. Zantana M. Zandate
 Zeid Women's Health Center, Ltd
 Mr. and Mrs. Jim Zucca

A Toast To East Texas Donors



A Toast To East Texas 2019

- A. E. Shull & Company
 Trevor Adams
 All American Party and Tent Rentals
 Dr. and Mrs. Mark R. Anderson
 Dr. and Mrs. Nicholas Andrade
 Austin Bank
 Ms. Jana Autry
 Drs. Harshivinderjit S. and Neena Bains
 Mr. and Mrs. Trevor Bates
 Bear Creek Smokehouse
 Mr. and Mrs. Hal K. Bertram
 Ms. Colleen E. Bloss
 Mr. and Mrs. Michael J. Bosworth
 Dr. and Mrs. Christopher S. Boylan
 Mr. and Mrs. Steve Bratteli
 Mr. and Mrs. Edward Brawner
 Mrs. Carrie W. Brookshire
 Dr. and Mrs. Jonathan T. Brown
 Mr. and Mrs. Keith Buckner
 Mrs. Marilyn P. Budde
 Mr. Kevin Trizna and Ms. Sonja Buie
 Mr. and Mrs. Fred Bunker
 Mr. and Mrs. Jon Burmeister
 Dr. and Mrs. James A. Caccitolo
 Mr. and Mrs. Matt Carpenter
 Reverend and Mrs. John P. Carr
 Mr. and Mrs. Darrell Chase
 Mr. and Mrs. Randall V. Childress
 CHRISTUS Health
 CHRISTUS Trinity Mother Frances
 Health System Volunteers
 Mr. and Mrs. Steve Conaway
 Mr. and Mrs. Wade Coody
 Mrs. Michelle L. Cook, NP
 Mr. and Mrs. W. Paul Cooper
 Dr. and Mrs. J. Stuart Crutchfield
 Mr. and Mrs. Robert C. Curtis
 Dr. and Mrs. Kenneth D. Cushman
 Dakotas
 Mr. and Mrs. Blaine Davis
 Mrs. Susan Davis
 Mr. and Mrs. Robert S. Davis Jr.
 Mr. and Mrs. Matt Denson
 Dr. Rachel and Mr. Matthew DeVaney
 Mr. Craig Dickerson
 Mr. and Mrs. Ken Dietz
 Mr. and Mrs. Ryan Dixon
 Ms. Julie A. Duren
 Mr. and Mrs. S. Ray Durham
 Mr. and Mrs. Austin T. Eagleton
 Mr. and Mrs. Clay Eiland
 Mr. and Mrs. Jim Ellis
 The Honorable and Mrs. Kevin P. Eltife
 Scott Emerick
 Ms. Karen M. Enright
 Epic
 Dr. and Mrs. Paul M. Fanning
 Mr. and Mrs. Bruce C. Faulkner
 Mr. and Mrs. Jose A. Feliciano
 Ms. Jayme Fitzpatrick
 Forget Me Not Flowers
 Mr. and Mrs. Scott F. Fossey
 Dr. and Mrs. James Fox
 Garden Style
 Ms. Melissa Giffin
 Mr. and Mrs. James Gillingham
 Mr. and Mrs. James S. Gillingham
 Mr. and Mrs. J. Christopher Glenney
 Mr. and Mrs. Kenneth E. Goates
 Ms. Renee Gray, NNP-C and Mr. John Murphy
 Mr. and Mrs. Don Griffin
 Mr. and Mrs. Steve Hardy
 Mr. and Mrs. W. Scott Hart
 Dr. Misty and Mr. Scott Herod
 Mr. and Mrs. Clifton E. Hughes, Jr.
 Mr. and Mrs. Casey Hymmer
 Ingersoll Rand/Trane
 Mrs. Mary M. Irwin
 Dr. and Mrs. C. Noah Israel
 Jack Ryan's Steakhouse
 Mr. and Mrs. Alan R. Jackson
 Dr. Carolyn and Mr. Chris Jenks
 Mr. and Mrs. Don Robert Johnson
 Mr. and Mrs. J. Alan Jones
 Dr. and Mrs. Kenneth B. Kummerfeld
 Mr. and Mrs. Nathaniel Kummerfeld
 Mr. and Mrs. Matthew Laine
 Ms. Margaret J. Lam
 Mr. and Mrs. Harry L. Leatherwood
 Mr. and Mrs. Leonard A. Leifer
 Mr. and Mrs. James T. Lestor
 Dr. and Mrs. Scott M. Lieberman
 LMT Wealth Management Group - Merrill Lynch
 Mr. and Mrs. William C. Lust
 Mr. and Mrs. Reid Martin
 Dr. Aimee Massey
 Mr. and Mrs. Michael K. Mast
 Mr. and Mrs. James J. Mazzu
 Mr. and Mrs. Brent McCauley
 Mrs. Frank O. McClendon
 Mr. and Mrs. John McKinney
 Mr. and Mrs. Byron Meads
 Mr. and Mrs. Timothy C. Meads
 Drs. Nicholas and Michelle Medel
 Dr. Monique R. Mills
 Mr. and Mrs. Jamal Moharer
 Ms. Kay Monigold
 Dr. Brenda and Mr. Jim Morris
 Dr. and Mrs. Fadi Nasrallah
 Mr. and Mrs. Andy Navarro
 Mr. and Mrs. Bryan Neal
 Mr. and Mrs. Mark Nelson
 Dr. and Mrs. Michael J. Norton
 Mr. and Mrs. Danny Noteware
 Mr. W. Thomas Nourse
 NuTech, Inc.
 Mr. and Mrs. Ted Odom
 Olive and Home
 Paul Overstreet
 Mr. and Mrs. Carl M. Owens
 Mrs. Bonnie C. Palmer
 Ms. Sheryl Rogers Palmer
 Mr. and Mrs. Russell Patterson
 Dr. Julie V. Philley and Mr. Richard Lee
 Dr. and Mrs. Hugh R. Poindexter
 Mr. and Mrs. Jason J. Proctor
 Prosperity Bank
 Mr. and Mrs. Bill Pulliam
 Dr. Nancy L. Pusser and Mr. Timothy C. Sherwood
 Mr. and Mrs. William K. Putnam
 Mr. and Mrs. Richard R. Redman
 Regions Bank Tyler
 Mr. and Mrs. Stan Riley
 Mr. and Mrs. Reed Rippy
 Mrs. Linda Rowe
 State Farm Companies Foundation
 Ms. Linda Rudd and Mr. Steve P. Hellmuth
 Saleh Family Foundation
 Dr. and Mrs. Gregory A. Schultz
 Mrs. Cindy Rudd Scritchfield and Mr. John Scritchfield
 Dr. Hope and Mr. John Short
 Mr. and Mrs. Alfred E. Shull
 Mr. and Mrs. Collin C. Shull
 Mr. and Mrs. Brian C. Smith
 Mr. and Mrs. Mackey Smith
 Mr. and Mrs. Harold Smotherman
 Sola Bread Co.
 Mr. and Mrs. John E. Soules, Jr.
 Southside Bank
 Mr. and Mrs. Jerry J. Spencer
 Mr. and Mrs. Mason Spradlin
 Mr. and Mrs. Jay Stenkylyft
 Bishop Joseph E. Strickland
 Mr. and Mrs. Kyle Strickland
 Dr. and Mrs. Lourell E. Sutliff
 Mrs. Elizabeth Sutton
 Dr. Tiffany and Mr. Chad Taylor
 Texas Bank and Trust
 The Arbor
 The Genecov Group, Inc.
 The R. W. Fair Foundation
 The University of Texas at Tyler
 Mr. and Mrs. Craig E. Thomasson
 Mrs. Marilyn M. Thompson
 Dr. and Mrs. J. Dan Toney
 True Vine Brewing Company, LLC
 Mr. and Mrs. Michael K. Truman
 Tyler Junior College
 Tyler Valet Parking Services
 VERABANK
 Mr. and Mrs. Jack Walker
 Dr. and Mrs. John F. Walker
 Mr. and Mrs. H. A. Wall
 Mr. and Mrs. Kevin W. Walsh
 Mr. and Mrs. John Wampler
 Ms. Martha G. Warner
 Mr. and Mrs. Robert C. Weissmann III
 Mr. and Mrs. Robert B. Wells
 Mr. and Mrs. Mike Wilcox
 Mr. and Mrs. John P. Williams
 Watson W. Wise Foundation
 Mr. and Mrs. Michael C. Young
 Ms. Carol Zwan and Mr. Don McClellan



Associate CAMPAIGN



Share The Spirit 2019

- | | | | | | |
|-------------------------|-------------------------|-----------------------|-----------------------|---------------------|---------------------------|
| Cynthia M. Aarant | M. Shawn Bassham | Diane C. Bottoms | James W. Callis | Kathy M. Cope | Debra L. DeLaRosa |
| Matthew R. Abernathy | Jillian A. Battle | Kimberly J. Bounds | Annette Camille | Mary T. Copeland | Irene G. Deluna |
| Ignacio N. Acevedo | Emilinda I. Bautista | Ethel L. Bowie | Quiana L. Campbell | Darla C. Copley | Kenda B. Dempsey |
| Erin Acker | Dusty E. Baxter | Jo Ann Bowie | Robert H. Campbell IV | Tracy N. Corley | Joseph A. Dennis |
| Ashley B. Adams | Princess D. Beal | Adaleigh Bowland | Windy L. Cannon | Dana A. Cornett | Todd DeRoo |
| Cynthia P. Adams | Victoria E. Beall | Kathryn A. Bowman | Marilyn B. Cantero | Andrew L. Cornish | Patricia A. Derrett |
| Darla K. Adams | Julie A. Beam | Shelli E. Boyd | Elizabeth A. Capizzo | Scott R. Cottingham | Jeffrey A. Derrick |
| Karen A. Adams | Melissa A. Bearden | Jessica L. Boykin | Amy L. Carr | Marilyn K. Cotton | Kristy M. Dewbre' |
| Sheila G. Adams | David Beasley | Jacqueline E. Bozick | Jacob R. Carrasco | Ginnie L. Covey | Cara L. DeWolfe |
| Diana Aguilar Zarate | Jason C. Beaton | Mandy K. Bradshaw | Daniel Carrell | Michael D. Cox | Angelica G. Dews |
| Shawn K. Alberti | Yvonne M. Beaton | Kristen E. Brady | Clare M. Carter | Traci N. Crane | Coleen R. Dews |
| Heather D. Alexander | Kristen E. Beddingfield | Rickey L. Brands | Donna K. Carter | Rachel N. Crawford | Richard B. Dews |
| Gaye N. Allen | Paulino B. Beleno, Jr. | LaToya C. Branham | Michael K. Carter | Taylor R. Creedon | Timothy B. Different |
| Pamela S. Allen | Elizabeth P. Bell | Kathryn J. Brazzel | Sheryl L. Carter | Shannon R. Crim | Nina M. Diggins |
| Teri D. Allen | Jennifer L. Bell | Thressie Bridges | Charlene E. Carver | Alfreda Crispin | Brandon C. Dike |
| Rebecca A. Allison | Lerletha L. Bell | Angela D. Bright | Florence L. Cary | Jonathan Crissey | Sandra R. Dimas |
| Elizabeth V. Alvarado | James S. Bendall | Christi A. Britton | Mary J. Cassidy | Jodi L. Crosby | Enereida T. Dixon |
| Andrea R. Anderson | Robin C. Bendall | Kenneth D. Britton | Dr. Krystal L. Castle | Beverly M. Crossley | Leah C. Dixon |
| Angela L. Anderson | Sandra S. Benitez | Linda J. Brodnax | Erica N. Cauley | M. Chad Crow | Sondra A. Dodgen |
| B. Jan Anderson | Chasity L. Bennett | Danielle R. Brooks | Elizabeth M. Causey | Janice C. Crowder | J. Reid Dollahite |
| Melissa K. Anderson | Jeffrey S. Bennett | Jodi L. Brooks | Michelle Cazarez | Grace S. Crudup | Drema L. Domain |
| Mercedes L. Anderson | Tracey A. Bennett | Russell T. Brooks | Tina Chamness | Tina E. Crymes | Jennifer L. Dooley |
| Richard L. Anderson | Vicky S. Benscoter | Stacie L. Brooks | Cynthia D. Chapman | Kelly S. Curry | Dee Ann Dorsey |
| Paul K. Andries | Brooke L. Bentley | Melissa E. Broughton | Amber N. Chauncey | Emma H. Curtis | Elicia Dorsey |
| Anonymous | Christopher L. Bergfeld | Angela R. Brown | Theresa A. Cheaney | Sage O. Curtis | Lacey V. Dover |
| Hyacinth A. Appleton | Alysen W. Best | Bonnie J. Brown | Deborah L. Chelette | Carol A. Cushman | Rickey D. Downey |
| Alma B. Arenivas | Ronna M. Best | Casey R. Brown | Loree C. Ching | Kimberly J. Dailey | Terri C. Downey |
| Karen J. Armstrong | Edward J. Beu | Michelle L. Brown | Karen Christian | John D. Daniel | Amanda K. Downs |
| Rebekkah L. Armstrong | Kelli K. Beu | Shellwyn J. Brown | Sherri L. Chumbley | Sarah K. Daniel | Kristi M. Driggers |
| Drunita F. Arps | Rebecca A. Beu | Stephanie M. Brown | Sharon L. Clague | Emily T. Danielson | Mark J. Driscoll |
| Jonathan T. Arriola | Jonathan C. Beverly | Tawn D. Brown | Dawn P. Clark | Bethany Davidson | Shelby E. Dudley |
| Lisa R. Ashton | Cynthia A. Bewley | Kelsey L. Brownlow | Haley L. Clark | Brian R. Davis | Natalie K. Duncan |
| Elizabeth J. Ausburn | Kamie L. Bishop | Sherry A. Brumley | Judy R. Clark | Carrollyne C. Davis | Patricia L. Dunklin |
| Pamela S. Austin | Martha R. Bitter | Tandra M. Bryner | Linda L. Clark | Cherryl D. Davis | Mary J. Dunlap |
| Bonnie S. Avonrude | Alyssa M. Black | Rebecca R. Buckwalter | Teisha T. Clay | Heather K. Davis | Shaquita L. Dunning |
| Brock A. Babin | Julie A. Blakeley | Mey B. Buentipo | M. Fran Cleaver | Jennifer D. Davis | Lori L. Duphorne |
| Edelyn F. Badillo | Kimberly R. Blakey | Patricia A. Bullard | Christi B. Cliborn | LaSaundra J. Davis | Sherri J. Durham |
| Kelly A. Baggett | Codie L. Blaser | Sedina Bunch | Pam J. Clifton | Laura A. Davis | D. Kathlene Dyer |
| R. Shawn Bagwell | Christine A. Blaylock | Tonya K. Burke | Lisa M. Cloud | Penny B. Davis | Hayley N. Eberlan |
| Amanda W. Bailey | Christine E. Blevins | Jennifer M. Burleson | Kelli M. Cohen | Sheila J. Davis | Jeannie M. Ebnet |
| Brian J. Bailey | Sandra L. Bloch | Donna M. Burnley | Chelsea Collier | Thelma J. Davis | Frank M. Eche |
| Krista J. Bain | Lisa L. Blocker | Richard T. Burrow | Amy Beth Collins | Robert G. Day | Mike Eckhard |
| Melvin L. Baldrige, Jr. | Sonny B. Boaloy | Marilyn R. Burwitz | Darlene Collins | Marla S. Dazey | Di'Mond N. Edmond Jackson |
| Terry B. Ball | Kimberly D. Bobbitt | Jim F. Bush, Jr. | Donna S. Collins | Linda C. De Villa | Rhonda S. Efurud |
| Sofia R. Barbosa | Bret Bochsler | Rhonda Butler | Jennifer K. Collins | Michele L. Dean | Petra D. Elkins |
| Patti A. Barichello | Alisha D. Bogan | Christian H. Cabello | Annette B. Colorossi | Stanecia W. Dearman | Allison R. Ellis |
| Belinda Barker | Karla S. Boles | Amber N. Cain | Melissa J. Colwell | Kayla R. Decker | Theresa H. Ellis |
| Randy A. Barkley | Tierany N. Booker | Jennifer T. Calamba | Shirley T. Combs | Brandi J. Dees | Walter C. Ellis |
| Jeanetta Barnes | Peter A. Borke | Debra A. Caldwell | Melanie A. Coody | Emily B. Dees | Gabrielle P. Ellison |
| Alisha C. Barron-Clark | Stephen B. Botha | Jerry L. Calender | Tracy M. Cook | Emily L. Deese | William B. Elmer |
| Venita D. Basham | Catherine A. Bottom | Aaron K. Calhoun | Tina M. Cooper | Geertje DeJong | Nell H. Elmore |

Share The Spirit 2019

Hearthly L. Emerick	Kimberly L. Gibson	Denise C. Henson	Cynthia C. Jaques	Erica J. Landrum	Deborah F. McCowin
Amy E. Enlow	Carol F. Gilbert	Samantha Heredia	Amanda R. Jenkins	Allison V. Lane	Kendra L. McCracken
Marisa L. Ensley	Dana L. Gilbert	Audra L. Hernandez	John C. Jenkins	Emily J. Langford	Cynthia L. McCrary
Brinley A. Erwin	Gregory P. Gill	Brittani N. Hernandez	Sherry K. Jenkins	Kellee L. Langley	Lois C. McCuan
Sha'Nita N. Erwin	Christine K. Gish	Cinthia E. Hernandez	Parizad S. Jeremy	Jessi E. Lanier	Lasaundra M. McGee
Gerarda Escalera Ibarra	Colleen A. Glasscock	Eva L. Hernandez	Vicki M. Johns	Sheri L. Lankford	Sebastian L. McGee
Veronica Esparza	Cameron F. Goff	Erin N. Herring	Amber D. Johnson	Taylor C. Laprairie	Jana J. McGill
Jennifer R. Essary	R. Dale Golden, Sr.	Veronica Hewitt	Boyce A. Johnson	Nancy Lara-Fajardo	Sherry R. McGovern
Kayla A. Essex	Deysi Gomez	Vicky L. Hickman	Cynthia A. Johnson	Beverly K. Laskowski	Yolonda McGowen
Victoria C. Estacio	Ruby M. Gomez	Michelle M. Hicks	Dana A. Johnson	Haley K. Latson	Marilyn R. McKellar
Fe L. Estrelles	W. Michael Goodson, Jr.	Stephanie M. Hicks	Jackie G. Johnson	Alyssa A. Laurich	Amber M. McKelvey
Leisa L. Ethridge	Robin R. Goodwin	Jennifer M. Higginbotham	James L. Johnson	Tammy L. Lawless	Betty A. McLain
Alicia G. Eubanks	Micho L. Grady	Roland Higginbotham	Janice H. Johnson	Cassie D. Lawson	Kristine A. McLaughlin
Keith A. Evans	Robert R. Graham	Jeffrey M. Hill	Tonya L. Johnson	Melody K. Lawson	Sarah A. McLean
Brenda L. Evetts	Georg'n Granberry	Hollie M. Hilliard	Tonya R. Johnson	Kristin J. Lee	Maggie W. McMillian
Rechel Fatunde	Cheryl L. Gray	Taylor L. Hinds	Victoria L. Johnson	Ronald M. Lee	Diana R. Mechelay
Tonya G. Faulkner	Kimberly A. Gray	Latoshi Hines	Dawn M. Johnston	Karleen K. Lennon	Carol J. Medina
Samantha A. Fay	Courtney B. Green	Michael G. Hines	Amber D. Jones	Danielle J. Letizia	Kandra H. C. Meeks
Tawonda J. Felton	Morgan J. Green	Jennifer L. Hinkle	Jennifer K. Jones	Aimee E. Lewis	Teresa A. Meeks
Theresa A. Fernandez	Laura R. Greenlee	Susan J. Hinson	Kipper L. Jones	Micaela M. Lewis	Joshua R. Meekop
Daniel L. Feuquay	Timothy S. Grier	Carla D. Hitt	Magdaline S. Jones	Brittany M. Little	Suzanne S. Melhart
Hannah E. Fincik	Shawn H. Griffin	Robert W. Hitt	Melinda J. Jones	Charles R. Little	J. Lynette Melton
Alisa D. Finley	Jennifer S. Griggs	Quentin Hoard	Sheila A. Jones	Dora M. Locke	Shaina L. Melton
Deanna H. Finn	Susie Grigsby	Elizabeth K. Hobbs	Suzanne W. Jones	Paula Loftin	Maria F. Mendez
Celeste D. Fisher	Mildred Grisham	Dr. William R. Hobbs	Teressa A. Jones	Nela W. Long	Kati N. Metzigg
Vanessa Flores	Carol L. Groves	Georgette H. Hodges	Chelsea M. Jordan	Marilyn E. Love	April M. Miller
Kasandra L. Flournoy	Kristen R. Gugar	Tara L. Hodges	Janis K. Jordan	Jill R. Lovelady	Gary D. Miller
Robbie D. Folker	Norela Gutierrez	Wendy L. Hoecherl	Tiffany K. Jordan	Elizabeth R. Lowe	Nancy J. Miller
Scott F. Fossey	Donna B. Guy	Courtney T. Holcomb	Father Luke K. Kalarickal	Brianna M. Lozoya	Rachael A. Miller
Veronica C. Fox	Esmeralda M. Haddad	Mary V. Holcomb	Julie Kanniard	Steven R. Luttrell	Wynde M. Miller
Beverly G. Francis	Kimberly K. Hagan	Whitney M. Hollis	Aaron W. Katchmarik	Cindy R. Machristie	John J. Mimier II
Elizabeth O. Francis	Ralph E. Halberstadt	Carla J. Holmen	James D. Keith	Katherine B. Macias	Debra E. Minnick
Deborah A. Franklin	Angela M. Halfpenny	Randy R. Holmes	Hayley M. Kelly	Jamie L. Maddox	Maria L. Mireles Caballero
Demetria Franklin	Cassie Hall	Amy J. Honzell	Julie M. Kelsey	Terry P. Maddox	Aulbry L. Mitchell
Sherry D. Franklin	LaQuenatt R. Hampton	Justin S. Hooper	Amanda L. Kennedy	Shannon K. Magness	Donald J. Mitchell
Nelly S. Franks	Karen D. Hamrick	Mary B. Hooper	Jennifer D. Kennedy	Don R. Mahana	Sherry A. Mitchell
Judy A. Frasier	Bruce A. Hand	Deanna M. Hornbuckle	Zelma L. Kennedy	Deborah A. Mahler	Tatyanna G. Mitchell
Jennifer A. Freeman	Stephanie T. Hankins	Patricia G. Hortman	James A. Kennerly	Marjorie S. Maiquez	Eva Mollinedo
Carmen Frias	Michelle C. Hanna	Bobbie J. Horton	Deborah A. Kersh	Gregory M. Mallett	Carla Y. Montgomery
Dwayne Friesen	Patricia A. Hanna	Kenneth V. Houck	Jill A. Key	S. Pat Malone	Jennifer M. Mooney
Jennifer W. Fritz	Karen L. Hargrave	Kathy A. House	Wanda J. Key	Christie L. Marlow	Joseph M. Mooney
Lisa K. Frowick	Denise L. Harmon	Sydney N. Houser	Ajmal Khan	Donna L. Martin	Connie M. Moore
Cynthia A. Fulton	Kathy A. Harmon	Sara L. Housley	Reann Kiang	Glenda T. Martin	Janet W. Moore
Carter A. Gabriel-Britton	Melissa E. Harper	Cassandra D. Howard	Charles E. Kimble	Sara M. Martin	Mindy M. Moore
Janet M. Gadt	Jenise M. Harris	Susan F. Howes	Cynthia Kimbrell	Stacy Y. Martin	Nathan W. Moore
Susan M. Galindo	Joseph L. Harris	Deborah A. Hubbard	Kasey J. Kimbrough	Aaron D. Martinez	Patricia A. Moore
Leslie M. Gamino	Yolonda L. Harris	Marleia L. Hudson	Misty M. Kimbrough	Heather L. Martinez	Rodney W. Moore
Jarmy A. Garay	Tammy W. Harrold	Mikayla B. Huff	Beverly K. Kincaid	Evelyn Martinez-Rodriguez	Tabitha K. Moore
Leslie Garcia	W. Scott Hart	Cynthia L. Hughes	Tammy R. Kinder	Terri S. Mason	Jean M. Moorhead
Lucia M. Garcia	Mary R. Harter	Samuel J. Hughes	Viola R. King	Amy M. Massey	Carrie L. Mooty
Lara K. Gardiner	Rachel A. Hass	Dana D. Hulstine	Tammy R. Kirk	Marva L. Matheny	Mariela E. Morales
Christine J. Gardner	Brandi L. Hassell	Latisha M. Humber	Sundi Y. Kissinger	Ashley S. Mathews	Chaney B. Moreland
Gabriella Garduno	Cindy D. Hatton	Melissa J. Hurst	Mark G. Klebes	Angie B. Matson	Leticia E. Moreno
James E. Garland	Bethany L. Hawkins	Margarita C. N. Hutchins	Ruth S. Klock	Roxann Matthews	Ana L. Morgan
Robin L. Garland	Jennifer L. Hawkins	Kara J. Hutton	Stephanie E. Knipe	Kacey N. Maxwell	Cheryl D. Morgan
Jennifer W. Garner	Rode L. Head	Manuela I. Ibarra	Stephanie J. Koppel	Debi A. Maynard	Delightful L. Morris
Michael W. Garner	Evonne D. Healy	James P. Iverson	K. Renee' Krammes	Lexie Y. McAlister	Michael P. Morrison
Alisha M. Garrett	Whitney L. Heddin	Karen A. Ivy	Michelle C. Kuechle	Ronda D. McBride	Linda W. Moseley
Leah M. Garrett	Lavonne I. Helm	Kathaline Jacks	Brett S. Lackey	Amanda K. McCarty	Lori L. Moseley
Nancy C. Garrett	Gwendolyn P. Helmer	Jasmine A. Jackson	Glenna L. Lackey	Chandler McCarty	Christina N. Mosier
Monaliza Gaw	Carly J. Helms	Kiva S. Jackson	Wendy M. LaFaitt	Jimmy D. McClelland	Allison A. Mosley
Ronny G. George	Patricia G. Hendrix	Leslie R. Jackson	Maria T. Lamb	Ethan Q. McCleskey	Heather Mosley
Richard J. Gerth, Jr.	Melissa Henly	Paula J. Jackson	Debra B. Lambert	Ryan W. McCloskey	Patricia D. Mott
Ashley P. Gibbons	Dr. Britney L. Henning	Cindy M. James	Nicole J. Lambeth	Logan W. McClure	Paul C. Mullens

Share The Spirit 2019

Samantha K. Mullens	Shelley L. Perkins	Holly E. Robinson	Sandra A. Small	Christa M. Thomas	Rosaleen Weiss
Nina J. Mullican	Angela S. Perryman	Lisa R. Robinson	Linda K. Smiley	Amy C. Thompson	Robin L. Welch
Barbara K. Mundt	Brandi L. Phillips	Mary A. Robinson	Amanda G. Smith	Dominique J. Thompson	Carol Weldon
Lydia A. Munoz	Kristi L. Phillips	Susan C. Robinson	Angela M. Smith	Erin E. Thompson	Kathy L. Werner
Liz Murphy	Kassie K. Pike	Shelley R. Rockwell	Betty J. Smith	Karen L. Thompson	Tina G. Whiddon
Leigh A. Murray	Anne E. Pileggi	James D. Rodgerson	Darren D. Smith	Samantha Thompson	Aubrey White
Reverend Stephen R. Murray	Juana R. Pineda	Jo-An M. Rodriguez	Donna J. Smith	W. Adam Thurmon	Beckie L. White
Lisa P. Musselwhite	Lubica Pitonakova	Loreal N. Roe	Donna M. Smith	Brianne P. Tibbs	Elise E. White
Diane D. Myers	Ashley M. Pogue	Mashanta Rogers	Gloria D. Smith	Paula A. Tillison	Kristen K. White
Felicia K. Myrick	Stacy M. Ponder	Maria B. Root	Korde M. Smith	Bonnie A. Tinchler	Nicole D. White
Ma C. Najera	Tiffany A. Ponder	Angela D. Roper	Lashley A. Smith	Maria E. Tobias	Sherry L. Whiteside
Andy Navarro	Pamela T. Porterfield	Eymy C. Rosales Sandoval	Lloyd R. Smith	Chris M. Todd	Brooke Whitfield
Gilbert G. Navarro	Kimberly A. Powers	Courtney M. Ross	Misty D. Smith	Tina R. Todd	John R. Whitfield
Erin E. Neal	Daryl P. Pritchard	Freda D. Ross	Nicole M. Smith	Joiesielyn L. Toling	Cassie Widdows
Jackie S. Neault	Jason J. Proctor	Robin W. Rowan	Kelly W. Soger	Theresa C. Tomlin	T'Juaniequa B. Wideman
Candace R. Nelson	Ashley D. Pruitt	Terri K. Rowden	Patricia B. Sorick	Norma J. Tompkins	Wendy B. Wieland
Cathy D. Newman	Maria Concepcion C. Pujalte	Blake Rowe	Denise A. Sorrells	Nfansu M. Touray	J. Dorine M. Wilburn
Michael C. Newsom	Elizabeth A. Pulliam	Sharla D. Rucker	Tina D. Spain	Katherine S. Townsend	Patricia C. Wiley
Rebecca L. Newsom	Joy Pye	Alexandra Ruda	Ginger B. Spaude	Marybeth M. Tracy	Debbie G. Williams
MacKenzie C. Newsome	Rebekah L. Quarles	Pamela S. Ruehrmund	Patricia B. Spears	Mike Treadway	Kimberly L. Williams
Dr. Jerry A. Newton	Teresita C. Quibril	Paula J. Runnels	Christopher D. Spencer	Gayla E. Trowse	Lisa M. Williams
Moria A. Niekamp	Holly A. Ragan	D. Susan Russell	Megan R. Spencer	Deanna L. Tunnell	Loretta J. Williams
Amanda Nielsen	Gena L. Ragland	Jason R. Russell	Tarneshia L. Spencer	Dianna L. Turner	Marccella R. Williams
Emily A. Nipper	Cindy A. Rainer	Lynn A. Russell	Julie E. Stafford	Keviesha L. Turner	Sharon K. Williams
Holly Y. Nipps	Teresa A. Ramirez	Ida M. Ryan	Harrison R. Stanley	Landra K. Turner-White	Tamira L. Williams
Micah D. Nix	Catherine E. Ramm	Carrie R. Salas	Maegan D. Stanly	Vasundra R. Tutt	Veronica M. Williams
Dr. Brett R. Noteware	Vicki R. Ramos-Davis	Joanna Salazar	Kendra N. Stanton	Wendi R. Tuz	Vickie R. Williams
Debbie A. Nunley	Christina L. Ramsey	Lisa Sampson	Jana E. Starks	James R. Tyler	Ross J. Williamson
Carmen M. Nunn	Janna H. Ramsey	Stephanie L. Sampson	Lisa C. Starnes	Shannon G. Untersee	Christopher D. Willis
Ronald W. Odom	Phillip W. Randolph	Gabriela Sandoval	Arma L. Stevenson	Bobby G. Upshaw	Kathy L. Willis
Kristen D. Oertling-Collins	Penny A. Range	Maria G. Santibanez	T. Jefferey Stiefer	Albertje Van Dijk	Samantha R. Willson
Patrick L. Oleary	Aline M. Ranido	Fe R. Santucci	Consuelo Stokes	Roslyn D. Van Winkle	Enese M. Wilson
Dr. Lloyd M. Olsen	Arcadio R. Ranido	Tracy L. Sawyer	Robin S. Stokes	Janet L. Vance	Jaclyn D. Wilson
Sara L. Oltmann	Joanna R. Rankin	Sandra K. Schafer	Charlcie R. Stone	A. Nichole Veretto	Shirley Wilson
Kamille R. Orellana	Cecile E. Rapp	Elizabeth A. Schell	Chuck E. Stone	Kristine N. Verhalen-Evans	Bryan D. Winchell
Corinna A. Orms	James W. Rapp	Ashley R. Schick	Lynn Stone	Pamela L. Vest	Ginny L. Winchell
Deborah A. O'Sullivan	Eddie J. Ratliff	Edward Schmidt	Marsha K. Stone	Dustin J. Vidrine	Aaron J. Wind
Amy A. Overbay	Elizabeth A. Redman	Van E. Schmutz	Rhonda K. Strawn	Aimee M. Vincent	Anelise M. Wink
Juanita E. Oviedo	Linda M. Remer	Laura L. Schneider	Derek M. Streeter	Kelli L. Voight	Melinda K. Wink
Amber M. Owens	K. Leon Renfroe	Kristi N. Schumann	Cadi J. Strickland	Andrew von Eschenbach	Amy M. Winkler
Lisa A. Owens	Lee Reue	Micki J. Scoggins	Penny L. Strong	Pragna M. Wadhams	Adam W. Witcher
Dana L. Pace	Eva C. Reyes	Felicia E. Scott	Jean M. Strother	Terry L. Wainscott	Sharon E. Womack
Cherlyn L. Paez	Tracey L. Reynolds	Michelle C. Scott	Melody H. Stroud	Jeremy B. Wait	Jessica M. Wood
Sandra S. Palacios	Krista N. Rhodes	Wanda G. Scott	Debra M. Stubbs	Jessica L. Waites	Lila J. Wood
Christine M. Pannell	Daniel E. Richardson	Nancy S. Seaton	Kathleen C. Studer	Mona S. Walker	Teresa L. Wood
Chelsey L. Paris	Kathy C. Richardson	Kevin M. Seitz	Alex Suarez	Stacy R. Walker	Jim E. Woodley
Desirree A. Parker	Latisha S. Richardson	Clinton Sellers	Kelly M. Sullenbarger	Stephanie M. Walker	Reverend Josh Woolridge
Jacqueline L. Parker	Beverly K. Richmond	Suzanna K. Sexton	Sarah F. Sullivan	Amber B. Wallace	Hailee D. Wooten
Linda G. Parker	Ronald A. Rico	Gabrielle M. Shackelford	Terri D. Sumpter	Judith A. Walters	Jamie-Crystal L. Wylie
Wanda S. Parker	Cyrus D. Ridenour	Regina Shankle	Vu D. Ta	Karen L. Ward	Matthew A. Wylie
Adrian M. Pate	Sybil A. Rider	Sylvia R. Shaver	R. Renee Tannery	Kimberly B. Ward	Timothy P. Yarbrough
Michele L. Pate-Dooley	Brianna E. Ridgley	Mark J. Shaw	Kenzie L. Tarr	Johnnie S. Ware	Jeffrey B. Yarbrough, NP
Priyal Patel	Andrea J. Ries	Christina M. Shelton	Jacquelyn C. Taylor	Dickie W. Warren	Stephanie R. Yates
Stephanie M. Patterson	Sarah J. Rigsby	Justin E. Shelton	Lacey Taylor	Stacy L. Warren	Suzanne L. Yates
Tisha M. Patterson	Abigail M. Riley	Melinda K. Shelton	Mariah I. Taylor	Evelyn M. Washburn	Tonya Yohe
Valerie A. Patton	Suzie T. Rippy	Melissa K. Shelton	Marianne Taylor	Brandy C. Washington	Amy R. Young
Cathy S. Pavageau	Courtney L. Ritch	Catherine D. Shillcutt	Mary F. Taylor	Jo Ann Washington	Kimberli A. Young
Kristi L. Payne	Cynthia I. Rivera	Jamie Shults	Melissa G. Taylor	Jana L. Watkins	Regina P. Young
Bethany M. Penny	Jill F. Roach	Virginia K. Sigler	Shelly Taylor	Laresa L. Watson	Stephen K. Young
Maria M. M. Peradilla	Linda P. Robert	Julie L. Sigmund	Varina N. Taylor	Shelia C. Watson	Barbara J. Zimmerman
Jabeth T. Percell	Charlotte J. Roberts	Barakha Y. Silvia	Terri R. Teeler	Kelli D. Waymire	Cheri L. Zucca
Alyssa N. Perez	Laura L. Roberts	Misty R. Simmons	Pineda C. Teodoro	Miranda G. Weatherford	
Jennifer L. Perkins	Tamela S. Roberts	Sierra L. Skelton	Sandra I. Terrazas	Shannon P. Webb	
Kimberly P. Perkins	Gayla C. Robinson	Deena J. Sluder	Sharon M. Tharp	Tammy R. Wedeking	



Miracles Begin With You! Celebration
Thursday, January 30, 2020

A Toast to East Texas Preview Party
Thursday, February 27, 2020

TOUCHDOWN JESUS!

Back in the days when most people couldn't read or write, the church began the tradition of using statues, paintings and stained-glass windows to visually portray narratives from the Bible so that everyone, including little children, could learn the stories from Jesus' life. Today, statues of Jesus, Mary and the saints are ways to honor and preserve their memory in our everyday life.

We are blessed on the campus of CHRISTUS Mother Frances Hospital-Tyler to have many beautiful representations of our Christian heritage. As we build and expand in Tyler, we have begun repositioning some of the statues that grace various sites. In May, a much beloved statue was moved from its outdoor location to a new known as "Touchdown Jesus" due to Christ's upstretched hands that resemble the sign for "goal," this piece is a special favorite of mine. Jesus with His outstretched arms welcomed me to CHRISTUS Mother Frances Hospital in September of 1994. I would walk from one part of the hospital to the other and pass the statue of Jesus daily. His outstretched arms embraced me as I began my day praying for infants and their families in the nursery.

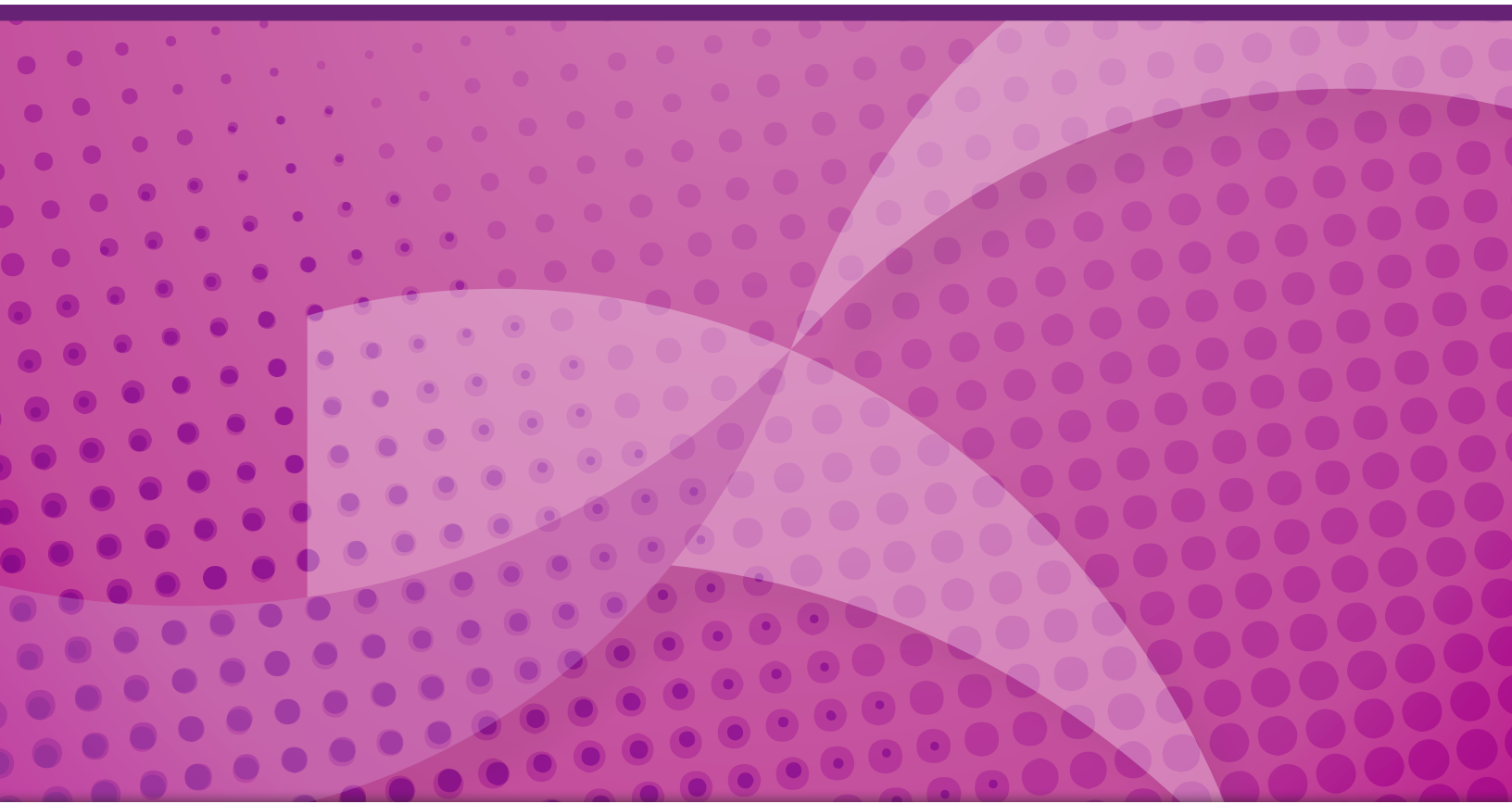
In its new location, the image of Jesus reminds me to go and serve with love and compassion, to welcome everyone who comes to our hospital and to tell them: you are not alone, we are here for you. It is my privilege to pray for our patients, their loved ones and our staff and to extend the healing ministry of Jesus Christ daily.

With God's blessings,

Sister Malgorzata Majszczyk "aka Sister Margo"

*Sister Margo is a member of the CHRISTUS Trinity Mother Frances Foundation Board of Directors





CHRISTUS Trinity Mother Frances Health System complies with applicable Federal civil rights laws and does not discriminate on the basis of race, color, national origin, age, disability, or sex. CHRISTUS Health does not exclude people or treat them differently because of race, color, national origin, age, disability, or sex.

CHRISTUS Trinity Mother Frances Health System:

- Provides free aids and services to people with disabilities to communicate effectively with us, such as:
 - o Qualified sign language interpreters
 - o Written information in other formats (large print, audio, accessible electronic formats, other formats)
 - o Provides free language services to people whose primary language is not English such as:
 - o Qualified interpreters
 - o Information written in other languages

If you need these services, contact a hospital employee. If you believe that CHRISTUS Trinity Mother Frances Health System has failed to provide these services or discriminated in another way on the basis of race, color, national origin,

age, disability, or sex, you can file a grievance with: Susan Willmann, MSN, RN, LSSBB, CHRISTUS Health, Civil Rights Coordinator, 919 Hidden Ridge, Irving, TX 75038, Telephone: 469-282-1298, Fax: 210-766-946.8 CHRISTUS.CivilRights@christushealth.org. You can file a grievance in person or by mail, fax, or email. If you need help filing a grievance, Susan Willmann, MSN, RN, LSSBB is available to help you. You can also file a civil rights complaint with the U.S. Department of Health and Human Services, Office for Civil Rights, electronically through the Office for Civil Rights Complaint Portal, available at <https://ocrportal.hhs.gov/ocr/portal/lobby.jsf>, or by mail or phone at: U.S. Department of Health and Human Services, 200 Independence Avenue, SW, Room 509F, HHH Building, Washington, D.C. 20201, 1-800-368-1019, 800-537-7697 (TDD) Complaint forms are available at <http://www.hhs.gov/ocr/office/file/index.html>.

ATENCIÓN: Si habla español, tiene a su disposición servicios gratuitos de asistencia lingüística. CHÚ Ý: Nếu bạn nói Tiếng Việt, có các dịch vụ hỗ trợ ngôn ngữ miễn phí dành cho bạn. 注意：如果您使用繁體中文，您可以免費獲得

語言援助服務 주의: 한국어를 사용하시는 경우, 언어 지원 서비스를 무료로 이용하실 수 있습니다. ملحوظة: إذا كنت تتحدث اذكر اللغة، فإن خدمات المساعدة اللغوية تتوفر لك بالمجان. اتصل برفق. خبردار: اگر آپ اردو بولتے ہیں، تو آپ کو PAUNAWA: Kung nagsasalita ka ng Tagalog, maaari kang gumamit ng mga serbisyo ng tulong sa wika nang walang bayad. ATTENTION : Si vous parlez français, des services d'aide linguistique vous sont proposés gratuitement.

توجہ: اگر ہو زبان فارسی گفتگو می کنید، تسهیلات زبانی بصورت رایگان برای شما ACHTUNG: Wenn Sie Deutsch sprechen, stehen Ihnen kostenlos sprachliche Hilfsdienstleistungen zur Verfügung. ATENÇÃO: Se fala português, encontram-se disponíveis serviços linguísticos, grátis. ВНИМАНИЕ: Если вы говорите на русском языке, то вам доступны бесплатные услуги перевода. 注意事項: 日本語を話される場合、無料の言語支援をご利用いただけます。 ใต้คำพูด: ถ้าพูดภาษาไทยคุณสามารถใช้บริการช่วยเหลือทางภาษาได้ฟรี ใต้คำพูด: తెలుగు భాష మాట్లాడతే, మీకు ఉచితంగా భాషా సహాయ సేవలు అందుబాటులో ఉంటాయి.